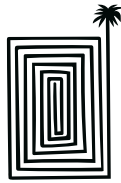


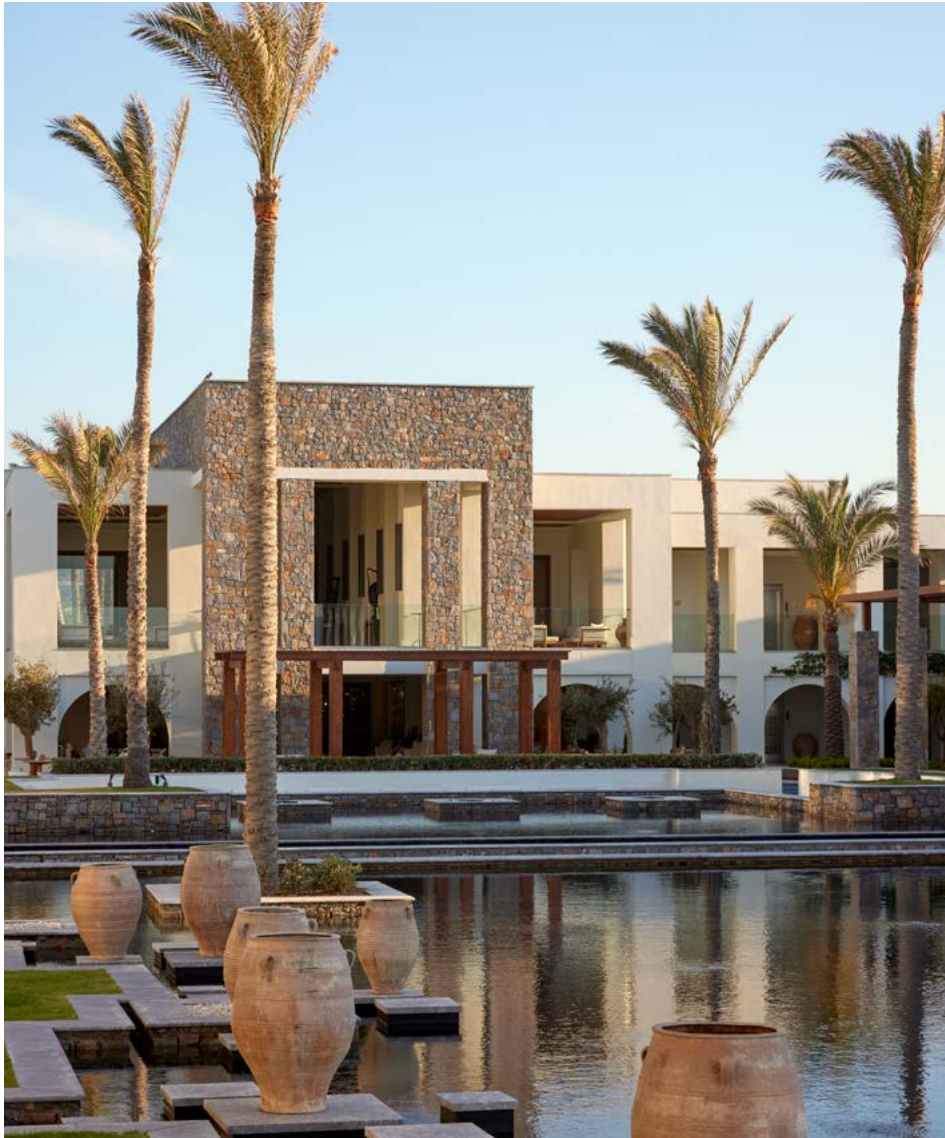
CRETE AVANT GARDE





AMIRANDES

A RESORT TO LIVE

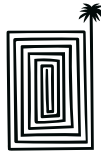


A CONTEMPORARY WATER PALACE IN CRETE.

Impossibly glamorous with movie good looks, this incredible property is styled after the water palaces of Minoan Kings & Venetian Nobles that once ruled Crete. Surrounded by water with revamped accommodation, it feels beyond a hotel & beyond a residence.

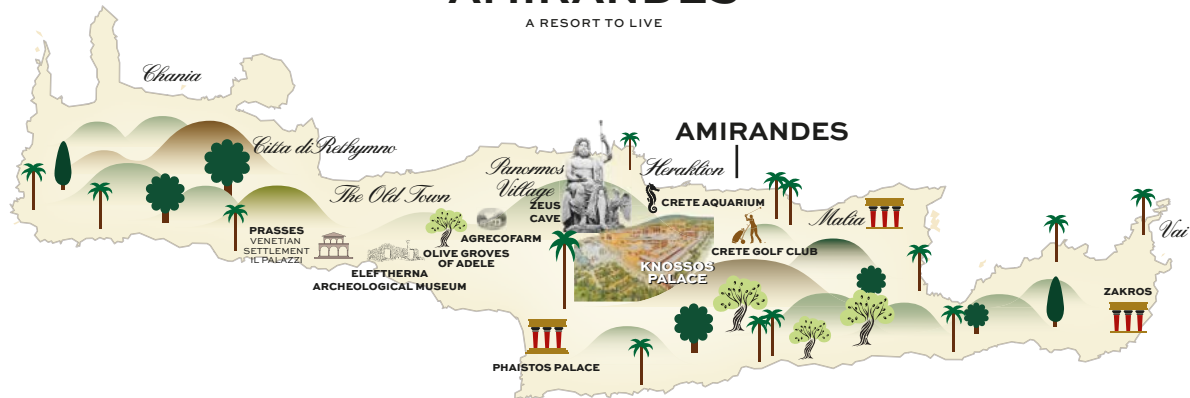


VIRTUOSO
PREFERRED



AMIRANDES

A RESORT TO LIVE



IDEAL FOR

Ideal for All ages, Luxury travelers, VIPs, couples or families

NEWS 2025

NEW OPEN 12 MONTHS

YEAR-ROUND ESCAPE IN CRETE

A Cretan sanctuary of warmth & wonder. Reimagined accommodations, exuding a residential, sophisticated luxury feel. Premiering new Sport Suites, revamped guest rooms, suites and villas. Also introducing the new Library, the delightful Knossos Patisserie, deluxe shopping & art collection.

LOCATION

18 km east of Heraklion with easy access to Heraklion's international airport and the world-famous archaeological site at the Palace of Knossos. The Crete Golf Club is also nearby • Heraklion town: 23 km • Heraklion Airport: 18 km • Chania Airport: 169 km

ACCOMMODATION

Total Rooms 204 • Rooms 147 • Bungalows 19, Suites 20 & Villas 18

BEACH & POOLS

Two coves of fine golden sand beaches.

- 1 Olympic-size Seawater Main Pool • 1 Children's Fresh water Pool
- 1 Indoor Fresh water Spa Pool (heated from October to April)

FEATURES

7 Restaurants & 2 Bars • 440 m² Elixir Alchemy Spa with Indoor pool & gym area • Grecoland kids Club & Kids Summer camp activities • Jewellery, clothing & holiday boutiques • Amphitheatre • Orthodox Greek Chapel

AWARDS

• Amirandes is named as the top pick in Crete and has been awarded a Certificate of Excellence 2023 by Trip Advisor • TUI Umwelt Champion • TUI Top Quality 2020 • TUI Holly • Travelife Gold • Best of the best hotel AWARD by Virtuoso • Green & Fair Hotel 2023 by TUI

MEAL PLANS

Breakfast A stunning variety of choices, ranging from the lavishness of American-style buffet to the elegance of exclusive à la carte options with local delicacies. Early & Late breakfast as well as In-room breakfast services are available upon request.

Dine Club Half-Board Programme An exciting half board dining concept with many options and extra advantages, including credit in selected restaurants in GrecoTel Resorts around Crete and free dining for kids. Enjoy free breakfast and lunch or dinner, plus credit allowance in amazing venues. For every 7 nights stay, indulge in two free à la carte dinners, including the option of one in the famous Agreco Farm. Drinks & Beverages not included.

Comfort All-in Pack For an absolute carefree holiday experience, upgrade to "Comfort All-In package". In addition to the dinner offered

in your Dine Club Halfboard you will enjoy lunch, selected drinks & beverages, as well as snacks at set times within the day. *See more at amirandes.com/dineclub*

RESTAURANTS & BARS

BREAKFAST

Amirandes, Int. Buffet Restaurant. American Gourmet Buffet with a choice of organic products and Greek Corner with traditional products and herb teas. In Room Private Breakfast. Early Continental Breakfast

LUNCH

Amirandes, Int. Buffet Restaurant. Traditional Mediterranean cuisine combined with international delicacies in the hotel's main restaurant.

Petrino, Beachfront Seafood Restaurant. Stylish, al fresco lunches at Amirandes beachfront seafood restaurant.

By the Pool, Snacks & Fresh salads

DINNER

Amirandes, Int. Buffet Restaurant.

Extensive Buffet Theme Evenings. Free of charge for guests in half board.

Xasteria, Cretan organic à la carte Restaurant

Cretan awarded à la carte Restaurant of organic products from GrecoTel's own Agreco Farm. Kids' Menus available.

Blue Monkey, Asian à la carte Restaurant

Oriental delicacies cooked to order and modern twists on Eastern favorites. Kids' Menus available

Lago di Candia, Grill fine à la carte Dining

A superb waterfront location with prime "steaks & fresh fish" grill menu. Kid's menus available.

Minotaur, Gourmet Italian à la carte fine dining

An incomparable Italian restaurant featuring an amazing collection of genuine Picasso ceramics. Ultimate dining experience at the Amirandes Floating Deck (June to September).

Knossos Patisserie, Traditional Patisserie

Discover our organic herbal teas & traditional homemade "kaloudia". A ritual not to be missed and always cherished. (November to March)

Agreco Taverna, Cretan Organic Dining

Visit Agreco farm's Taverna near Rethymno, where a sumptuous six-course menu of Cretan dishes, based on the farm's organic produce. Vegan / Vegetarian / Gluten Free options, as well as Vegan and BIO wines available in all restaurants.

BARS

Labyrinth Lagoon Bar

For a drink or a cocktail with the views of the lagoon and sea from the sunken lounges, drifting along to the serenades of the live evening music.



Sunset Lounge Selected lounge music and the most whimsical cocktails on the exclusive AmiranDES beach, a unique seaside setting for delighting in the stunning sunsets over the mesmerizing Cretan skyline.

ROOM SERVICE 24h at an extra charge

NOTE: Restaurants are subject to availability and weather conditions, reservations required in all à la carte restaurants.

KIDS

Kids Go Free Children up to 12 years old enjoy free kids dining in the "Tasty Corner", free Grecoland kids' programme and outdoor creative activities.

Grecoland Kids Club, 0-3 yrs. Pre-arrival order of baby equipment, baby food order. • Baby-sitting, extra charge

Grecoland Kids Club, 4-12 yrs. 6 times per week (10.00-18.00). Children under 4 yrs. must be supervised at all times by a parent or guardian.

Grecoland Kids Club

Discovery Adventures Activities

Kids Dining, 4-12 yrs. The Dine Club or Comfort All-In pack offers exclusively to children up to 12 years an ALL IN-Dining experience: All Day favorite snacks at Grecoland (11:00 -17:00) Tasty corner lunch at Main restaurant (12.30-14.00) A La Carte kids' dining in designated restaurants with special kid's menu including juices & refreshments or credit allowance for regular menu orders.

SPA & WELLNESS

440m² Elixir Alchemy Spa with Indoor pool & gym **Spa Facilities** • Indoor Pool • Sauna (Men & Women separate) • 6 Private Massage Rooms (5 singles + 1 double) • Beauty Salon • Changing Rooms • Seafront Beach Massage Area

Revamped Fitness room Fitness room with Technogym & Cybex cardio fitness equipment including: 2 elliptical trainer, 3 Treadmills, 2 Bikes, 2 Weights benches, 1 Much fitness machine (back machine, brand: Technogym strength), Technogym weights • Fitness aerobic area

FITNESS & ACTIVITIES

GYMNASTICS

Fitness room with cardio fitness equipment, Yoga, Aqua Gym

SPORTS

5x5 Mini Soccer, Street Basketball, Beach Volley, Table Tennis, Boccia. Extra charge: 2 floodlit Tennis courts (Astroturf) & 1 padel court, floodlit, instruction available.

Watersports: Extra charge: Watersports School, Sailing Cruises, Pedal Boats, Canoes, Kayak, Wind-Surfing, Jet-ski, Boat Safari, fishing Excursions

E-Bike Service: Includes digital tour, GPS and other in-app services (extra costs apply). NOTE: Cost depends on rental duration. The service will be available daily from 7 am - 11 pm. The rental procedure as well as the acceptance of the Terms & Conditions and the payment will be automated and completed by the guest.

PADEL Court: Lessons by professional instructor & equipment provided at extra charge.

Outside The Hotel: Extra charge: • The Crete Golf Club (10km) • Mountain Bike centre nearby (rental from hotel and servicing) • Scuba Diving • Horse Riding & Aqua park nearby • Luxurious Yachts • Culture and Craft Tours • Adventure activities.

EVENING ENTERTAINMENT

• Live Music every evening • Dance Shows on selected evenings • Live DJ music and a vibrant atmosphere on selected evenings • Outdoor Cinema (weather permitting) • Mini Disco

MEETING FACILITIES

Spacious conference rooms with technical equipment, capacity 10 - 300 persons.

ENVIRONMENTAL POLICY

• Travelife Gold Award • Use of organic products/ produce • Waste Water Treatment Plant • Waste and Batteries Recycling • Energy and Water Saving Devices • Ecological Cleaning Agents • Environmental Activities and Information for guests.

SERVICES

WiFi Free, in all hotel areas and guest rooms.

Greotel Mobile App proposes a world of information regarding your stay, online-reservation at the à la carte restaurants and services in and out of the hotel.

24h WhatsApp Concierge Designated staff members are at call on WhatsApp, to assist guests on everything they may desire.

Multilingual personnel English, German, Russian, French, Italian, Greek

Medical Services 24hr Medical cover, Doctor on call -extra charges may apply depending on guests' travel insurance. • Pharmacy at 2 km • Hospital at 25 km

Transport Car Rental Desk in hotel • Motor Bike Rental from reception • Bus stop at 1km

Taxi Service on request to Gouves (2km) • to Hersonissos (10km) • to Heraklion (23km) • to Heraklion Airport (18km) • to Ag. Nikolaos (46km)

VIP Luxury Transfer An exclusive, comfortable, reliable, transportation service is provided for absolute comfort of hotel guests.

Money All major Credit Cards are accepted • Nearest Bank/ATM inside the hotel

Voltage Current 220V.

Mobility Impaired Guests Due to hotel's layout most departments and rooms are not accessible for the mobility impaired guests.

Animals Dogs that weigh up to 8kg are allowed in selected villas and bungalows with private gardens ONLY. Restrictions apply. Service animals are allowed to accompany their handler in all hotel premises. View pets' policy at greotel.com/pets-policy.

Official Hotel Categorization Five star Resort

Contact details GR 70014, Kato Gouves, Heraklion, Crete, TEL.: (+30) 28970 41103, E-mail: reservations.am@greotel.com



AMIRANDES HOTEL MAP

- | | |
|--|--|
| 1. Main Entrance | 22. Individual Pools |
| 2. Reception | 23. Main Swimming Pool |
| 3. Lobby Lounge | 24. Children's Swimming Pool |
| 4. Labyrinth Lounge Bar | 25. By the Pool Brasserie |
| 5. Seafront Beach Massage Area | 26. Beach |
| 6. Amirandes Main Restaurant | 27. Watersports |
| 7. Lago di Candia Grill Fine Dining Restaurant | 28. Grecoland |
| 8. Minotaur Italian Gourmet Restaurant | 29. Amphitheatre |
| 9. Blue Monkey Asian Restaurant | 30. Tennis Courts |
| 10. Xasteria Cretan Restaurant | 31. Lagoon Wing |
| 11. Petrino Restaurant | 32. Villas |
| 12. Church | 33. Sunset Building |
| 13. Villas Beach Section | 34. Parking Area |
| 14. Conference Hall | 35. Mini Soccer |
| 15. Fifty-Fifty Boutique | 36. Hotel Main Gate |
| 16. Amirandes Boutique | 37. Pool Wing |
| 17. Charisma Jewellery Boutique | 38. Aerobic/Gym area |
| 18. Sunstores Holiday Boutique | 39. Playground |
| 19. Elixir Alchemy Spa | 40. Street basketball court & Padel court. |
| 20. Indoor Fresh water Pool | 41. Seafront Yoga Area |
| 21. Candia Wing | 42. Sunset Lounge Beach Bar |
| | 43. Floating Deck |
| | 44. Pool Deck |

ACCOMMODATION CHART

All room types include:

- Mini-bar with international brands
- Complimentary tea & coffee facilities
- Nespresso machine with 2 complimentary pods per adult/per day
- In-room safe
- 24h Room service
- Laundry services
- Luxurious beds & linens
- Hairdryer
- Bathrobes & slippers
- Deluxe bathroom amenities
- Complimentary WiFi
- LCD TV

Additionally in villas:

- Complimentary Full Set Bar in selected villas
- Complimentary Pillow Menu Service
- Daily maid service

ROOM TYPES	LOCATION	SIZE	SLEEPS	VIEW
Superior Guestroom	Candia & Lagoon Wing	31m ²	2	Sea/Garden
Luxury Guestroom	Candia & Lagoon Wing	35m ²	2 + 1	Sea/Side Sea/Garden/Lagoon
Luxury Bungalow	Front row, Garden area	33m ²	2	Garden
Superior Family Room, Garden View	Pool Wing	40m ²	3 + 1	Garden
NEW Superior Family Room, Side Sea View	Sunset Wing	40m ²	3 + 1	Side Sea
Family Suite	Candia Wing	40m ²	2 + 2	Sea/Garden
2-Bedroom Family Suite Main Building Garden View	Lagoon Wing	55m ²	2 + 2, 4	Garden View
Swim up Superior with private Garden	Candia Wing	31m ²	2 + 1	Garden
Swim up Family Suite with Garden	Candia Wing	40m ²	2 + 2	Garden
2-Bedroom Family Suite Garden View Private Pool	Candia Wing	55m ²	2 + 2, 4	Garden View
Deluxe Junior Bungalow Suite Private Heated Pool	First Row, Sea front Lagoon Wing	45m ²	2 + 1	Sea View
Luxury One Bedroom Suite with Frontal Sea View	Lagoon Wing	70m ²	2 + 1	Sea Front
1-Bedroom Grand Suite with Frontal Sea View	Lagoon Wing	90m ²	2 + 1	Sea Front
Luxury Junior Suite Gym & Private Heated Pool	Lagoon Wing	61m ²	2 + 1	Sea View
Amirandes VIP 2-Bedroom Suite Gym & Priv.Heated Pool	Lagoon Wing	85m ²	4 + 1	Sea/Garden
NEW 2 Bedroom Duplex Suite	Sunset Wing	80m ²	4	Garden & Side Sea
NEW 3 Bedroom Duplex Suite	Sunset Wing	100m ²	6	Garden & Side Sea
Amirandes Creta Villa with Courtyard Priv. Heated Pool	Villas area	65m ²	2 + 2	Direct Sea
Amirandes 2-Bedroom Dream Villa & Private Heated Pool	Villas area	85m ²	4 + 2	Direct Sea
Creta Beach Villa, Private Heated Pool & Garden	Sea Front, Villas area	53m ²	4	Direct Sea
Luxury 2-Bedroom Beach Villa, Sea Front, Private Heated Pool & Garden	Seafront, Villas area	75m ²	4 + 1	Direct Sea
Junior Presidential Villa Private Heated Pool & Garden	Seafront, Villas area	67,5m ²	2 + 1	Direct Sea
Presidential Villa Private Heated Pool & Garden	Seafront, Villas area	88m ²	4	Direct Sea
Royal Villa with Courtyard Private Heated Pool	Villas area	130m ²	6	Direct Sea
Grand Beach Residence with two Private Heated Pools & Extensive Garden	Seafront, Villas area	155m ²	8	Direct Sea
Royal Residence with Private Heated Pool & Extensive Garden	Seafront, Villas area	311m ²	4	Direct Sea
Grand Royal Residence with Two Private Heated Pools & Extensive Gardens	Seafront, Villas area	378m ²	6	Direct Sea

ACCOMMODATION LAYOUTS & PHOTOS ARE SAMPLES AND MAY VARY DEPENDING ON THE POSITION WITHIN THE HOTEL. MEASUREMENTS ARE APPROXIMATE TO THE NEAREST m²



SUPERIOR ROOM

Location: Candia & Lagoon Wings, floors 1st & 2nd
View: Sea/Garden View
Size: Indoor: 31 sq.m., outdoor: 5.5 sq.m.
Layout: Open plan
Sleeps: 2
Beds: King size bed or Twins
Bath: Shower cubicle, bath and a wash basin with vanity unit



Type 1



Type 2



LUXURY GUESTROOM

Location: Candia & Lagoon Wings, floors 1st & 2nd
View: Sea, Side Sea, Garden or Lagoon View
Size: Indoor: 35 sq.m., outdoor: 6 sq.m.
Layout: Open plan with sitting area
Sleeps: 2 adults + 1 child
Beds: King size bed or Twins
Bath: One wash basin, bathtub with waterfall lighting & shower cubicle



LUXURY BUNGALOW

FRONT ROW

Location: Garden Area, Ground floor only
View: Garden View
Size: Indoor: 33 sq.m., outdoor: 35 sq.m.
Layout: Open plan
Sleeps: 2 adults
Beds: King size bed or Twins
Bath: Spacious designer bathroom with two separate noir, marble wash basins, impressive bathtub centered in the room facing the sea & shower cubicle
Specials: Terrace with furnished sitting area, sunbeds & umbrella



SUPERIOR FAMILY ROOM

GARDEN VIEW

Location: Pool Wing, ground floor with terrace **View:** Garden View
Size: Indoor: 40 sq.m., outdoor: 5.5 sq.m. **Layout:** Master bedroom & separate living area ideal for children, separated by sliding doors **Sleeps:** 3 Adults + 1 Child **Beds:** 1 king size bed & 2 sofa beds **Bath:** One bathroom
Specials: Terrace with furnished sitting area, sunbeds & umbrella





NEW SUPERIOR FAMILY ROOM SIDE SEA VIEW

Location: At Sunset Wing, 2nd floor

View: Side Sea

Size: Indoor: 40 sq.m., outdoor: 5.5 sq.m.

Layout: Master bedroom & separate living area ideal for children, separated by sliding doors

Sleeps: 3 Adults + 1 Child

Beds: 1 king size bed & 2 sofa beds

Bath: One bathroom



TYPE_1



FAMILY SUITE

Location: Candia Wing, 1st floor with balcony or 2nd floor with balcony

View: Sea or Garden View

Size: Indoor: 40 sq.m./ outdoor: 6 sq.m.

Layout: Master bedroom & separate living area ideal for children, separated by sliding doors

Sleeps: 2 adults + 2 children

Beds: King size bed and 2 sofa beds

Bath: Shower cubicle, bathtub, WC and double washbasin vanity unit

Specials: Walk-in dressing area



2-BEDROOM FAMILY SUITE MAIN BUILDING GARDEN VIEW

Location: Lagoon Wing

View: Garden

Size: 55m²

Layout: 2 Open plan Guestrooms

Sleeps: 2 adults + 2 children or 4 adults

Beds: 2 King size beds

Bath: 2 bathrooms. One with wash basin & shower cubicle and one with wash basin, bathtub and shower cubicle.

Specials: Spacious accommodation, ideal for families with two children offering amazing views to Amiranides' Cretan gardens.





SWIM UP SUPERIOR WITH PRIVATE GARDEN

- Location:** Candia Wing, Ground Floor
View: Garden View
Size: Indoor: 31 sq.m., outdoor: 72 sq.m.
Layout: Open plan with sitting area
Sleeps: 2 adults +1 child
Beds: King size bed or twins
Bath: Shower cubicle, bathtub, WC and washbasin vanity unit
Pool: Private swimming pool 15-19 sq.m.



SWIM UP FAMILY SUITE WITH GARDEN

- Location:** Candia Wing, Ground floor with terrace
View: Garden View
Size: Indoor: 40 sq.m., outdoor: 72 sq.m.
Layout: Master bedroom & separate living area ideal for children, separated by sliding doors
Sleeps: 2 adults + 2 children
Beds: King size bed and 2 sofa beds
Bath: Shower cubicle, bathtub, WC and double washbasin vanity unit
Pool: 21-23 sq.m. with garden (not heated)
Specials: Shaded terrace with furnished sitting & dining area and direct access to the pool. Wooden deck allowing access to a spacious garden furnished with sunbeds & umbrella



2-BEDROOM FAMILY SUITE GARDEN VIEW PRIVATE POOL

- Location:** Candia Wing
View: Garden
Size: 55m²
Layout: 2 Open plan Guestrooms with sitting area
Sleeps: 2 adults + 2 children or 4 adults
Beds: 2 King size beds or twins
Bath: 2 bathrooms. One with wash basin & shower cubicle and one with wash basin, bathtub and shower cubicle.
Pool: 2 pools 15-19m²
Specials: Ample space with the comforts and amenities that set the standard at AmiranDES and the added bonus of two private pools and a terrace cradled by lush greenery.





LUXURY ONE-BEDROOM SUITE WITH FRONTAL SEA VIEW

Location: Sea Front, Amirandes Lagoon Wing, 1st or 2nd floor

View: Sea Front View

Size: Indoor: 70 sq.m., outdoor: 5 sq.m.

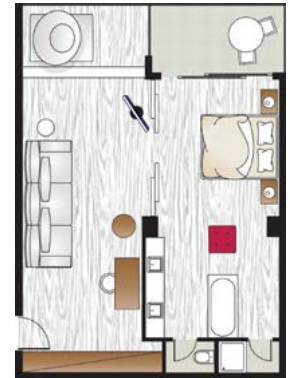
Layout: Open plan

Sleeps: 2 adults + 1 child

Beds: King size bed with direct sea views

Bath: Luxurious designed bathroom with an open sea view bathtub, two wash basins & shower cubicle

Specials: Balcony with outdoor dining area. Glass balcony doors transforming the suite into a huge balcony. Sizable wardrobe. Nespresso Machine. Pillow menu.



ONE-BEDROOM GRAND SUITE WITH FRONTAL SEA VIEW

Location: Sea Front, Lagoon Wing, 1st Floor & 2nd floor

View: Sea Front View

Size: Indoor: 90 sq.m., outdoor: 5 sq.m.

Layout: Open plan

Sleeps: 2 adults + 1 child

Beds: King size bed next to the balcony door, enabling a magnificent view of the sea and extra sofa bed

Bath: Luxurious designed en suite bathroom with an open sea view bathtub, two wash basins & shower cubicle with Hydro Massage

Specials: White floor. Balcony with outdoor dining area. Glass balcony doors transforming the suite into a huge balcony. Walk-in wardrobe. Nespresso Machine. Pillow menu.



DELUXE JUNIOR BUNGALOW SUITE WITH PRIVATE HEATED POOL

Location: First Row Lagoon Wing, Ground Floor

View: Sea Front View

Size: Indoor: 45 sq.m., outdoor: 30 sq.m.

Layout: Open plan Sleeps: 2 adults + 1 child

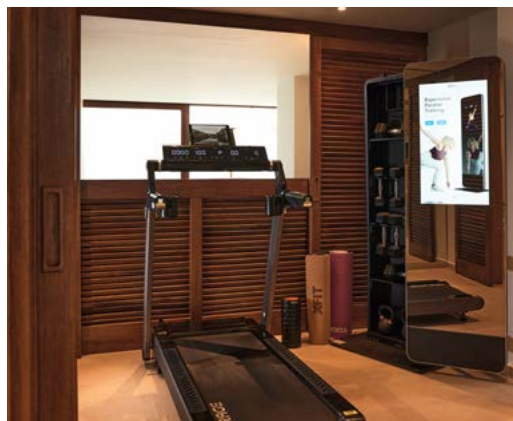
Beds: King size bed and extra sofa bed

Bath: Spacious bathroom with two wash basins, hydromassage bathtub, shower cubicle & en-suite wardrobe

Pool: Private pool 16m², heated up to 25°C upon request with extra charge (90€ per day)

Specials: Private shaded terrace with outdoor lounge. Nespresso Machine





LUXURY JUNIOR SUITE GYM WITH PRIVATE HEATED POOL

Location: Lagoon Wing, Ground Floor

View: Sea View

Size: Indoor: 61 sq.m., outdoor: 45,5 sq.m.

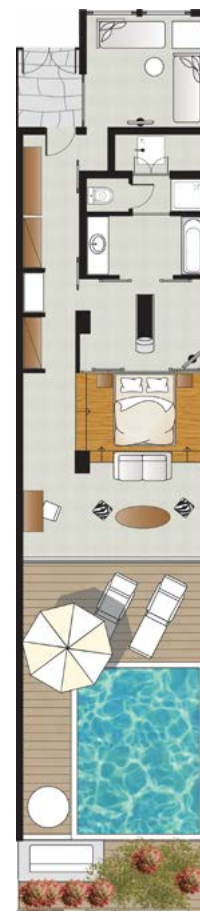
Layout: Open plan

Sleeps: 2 adults + 1 child Beds: Raised King size bed and extra bed

Bath: 24 sq.m. with a bathtub, washbasin with vanity unit, separate shower cabin, WC and a gym area with exercise equipment and LCD TV

Pool: Private pool 18m², heated up to 25°C upon request with extra charge (90€ per day)

Specials: Gym area with exercise equipment. Outdoor rain shower. Pillow menu. Nespresso Machine.



AMIRANDES VIP 2-BEDROOM SUITE GYM WITH PRIVATE HEATED POOL

Location: Lagoon Wing, Ground Floor

View: Direct Sea View & Garden View

Size: Indoor: 85 sq.m., outdoor: 50 sq.m.

Layout: Open plan master bedroom & separate living area ideal for children

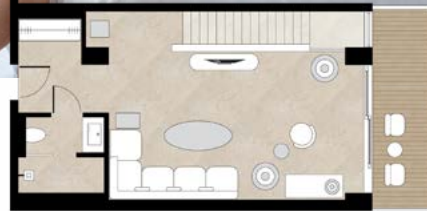
Sleeps: 4 adults + 1 child

Beds: Raised King size bed and 2 extra beds

Bath: 24 sq.m. with a bathtub, washbasin with vanity unit, separate shower cabin, WC and a gym area with exercise equipment and LCD TV

Pool: Private pool 18m², heated up to 25°C upon request with extra charge (90€ per day)

Specials: Gym area with exercise equipment. Large terrace with direct access to the pool. Outdoor rain shower. Pillow menu. Nespresso Machine



NEW 2 BEDROOM DUPLEX SUITE

Location: At Sunset Wing

View: Hotel's colorful gardens and Side Sea

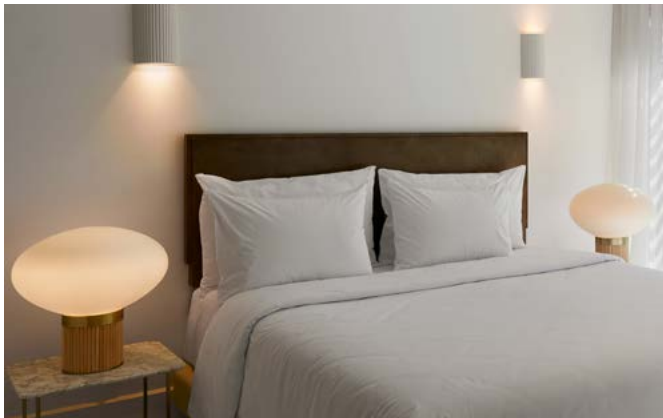
Size: 80m² indoor, 5.5m² outdoor

Layout: Maisonette. Two Master bedrooms & separate living area ideal for children

Sleeps: 4 adults

Beds: 1 king size bed & 2 sofa beds

Bath: Two bathrooms



NEW 3 BEDROOM DUPLEX SUITE

Location: At Sunset Wing

View: Hotel's colorful gardens and Side Sea

Size: 100m² indoor, 30m² outdoor

Layout: Maisonette. Three Master bedrooms & separate living area

Sleeps: 6 Adults

Beds: 3 king size beds

Bath: Four bathrooms





AMIRANDES 2-BEDROOM DREAM VILLA WITH COURTYARD

WITH SEA VIEW & PRIVATE HEATED POOL

Location: In the exclusive Villa Area, Ground & 1st Floor

View: Direct Sea View

Size: Indoor: 85 sq.m., outdoor: 50 sq.m.

Layout: 2floor residence. Ground floor: spacious living area which can be converted to a bedroom for 2 children & stylish second bedroom with 2 single beds. 1st Floor: King size master bedroom facing the sea & luxurious bathroom

Sleeps: 4 adults + 2 children

Beds: King size bed and 2 sofa beds and 2 sofa beds

Bath: 2 bathrooms. One on the ground floor with wash basin & shower cubicle and one on the 1st floor with dressing area, basin, bathtub and shower cubicle.

Pool: Infinity private pool 15m², heated up to 25°C upon request with extra charge (90€ per day)

Specials: Private terrace/Sun deck with a sunken lounge and dining area, sunbeds, umbrella & private sea view balcony. Pillow menu. Nespresso Machine. Private yard entrance with landscaped garden. Decorative fountain (in some villas).





AMIRANDES CRETA VILLA

WITH COURTYARD WITH SEA VIEW & PRIVATE HEATED POOL

Location: In the exclusive Villa Area, Ground & 1st Floor

View: Direct Sea View

Size: Indoor: 65 sq.m., outdoor: 67 sq.m.

Layout: 2floor residence. Ground floor: entrance hall with a spacious living area which can be converted to a bedroom for 2 children. 1st Floor: King size master bedroom facing the sea & luxurious bathroom

Sleeps: 2 adults + 2 children

Beds: King size bed and 2 sofa beds

Bath: 2 bathrooms. One on the ground floor with wash basin & shower cubicle and one on the 1st floor with dressing area, basin, bathtub and shower cubicle.

Pool: Infinity private pool 15m², heated up to 25°C upon request with extra charge (90€ per day)

Specials: Private terrace/Sun deck with a sunken lounge and dining area, sunbeds, umbrella & private sea view balcony. Pillow menu. Nespresso Machine. Private entrance with landscaped courtyard. Decorative fountain (in some villas).





LUXURY BEACH VILLA 2-BEDROOM SEAFRONT

WITH PRIVATE HEATED POOL & GARDEN

Location: In the exclusive Villa Area, Ground Floor

View: Direct Sea View

Size: Indoor: 75 sq.m., outdoor: 40-90 sq.m.

Layout: Two separate double bedrooms & 1 living area with a sofa bed which doubles as an extra sleeping area. The living area leads to the second bedroom through a landscaped open-air courtyard

Sleeps: 4 adults + 1 child

Beds: 1 King size bed, 2 single beds and an extra sofa bed

Bath: 2 bathrooms. One luxurious sea view bathroom with a double stone basin, hydromassage bathtub with views to the sea and to the private pool, separate shower. One bathroom with noir washbasin & separate shower cabin

Pool: Infinity private pool 17-18m², heated up to 25°C upon request with extra charge (90€ per day) with smooth current for exercising (upon request)

Specials: Private veranda with comfortable furniture in the terrace, sunbeds & umbrella. Landscaped garden with direct access to the west Beach area. Nespresso Machine. Pillow menu.





CRETA BEACH VILLA SEAFRONT WITH PRIVATE HEATED POOL & GARDEN

Location: In the exclusive Villa Area, Ground Floor

View: Direct Sea View,

Size: Indoor: 53 sq.m., outdoor: 40-90 sq.m.

Layout: Two separate double bedrooms

Sleeps: 4 adults

Beds: 1 King size bed, 2 single beds

Bath: 2 bathrooms. One luxurious sea view bathroom with a double stone basin, hydromassage bathtub with views to the sea and to the private pool, separate shower. One bathroom that leads to a landscaped courtyard with noir washbasin & separate shower cabin.

Pool: Infinity private pool 17-18m², heated up to 25°C upon request with extra charge (90€ per day) with smooth current for exercising (upon request)

Specials: Private veranda with comfortable furniture in the terrace, sunbeds & umbrella. Landscaped garden with direct access to the west Beach area. Nespresso Machine. Pillow menu.





ROYAL VILLA WITH COURTYARD

SEA VIEW & PRIVATE HEATED POOL

Location: In the exclusive Villa Area, Ground & 1st Floor

View: Direct Sea View

Size: Indoor: 130 sq.m., outdoor: 250 sq.m.

Layout: Two levels residence. Ground floor: an entrance hall, a comfortable living room & a master bedroom with walk in wardrobe & en suite bathroom. Upper floor: stylish lounge suite & sleeping quarters.

Sleeps: 4 adults + 2 children

Beds: 1 king size bed set against a theatrical backdrop of coloured lanterns & 1 oversized king size bed in the upper floor bedroom

Bath: Ground floor: 1 luxurious en suite bathroom with hydromassage bathtub, 1 wash basin & hydromassage shower. Upper floor: 1 bathroom with a free standing & deep soaking bathtub in the centre of the room with sea and garden views, 2 stone washbasins & hydro massage shower

Pool: Private pool 30 sq.m., heated up to 25°C upon request with extra charge (90€ per day) with a day bed, an infinity pool where the evening lightning of the pool gives an outstanding feeling of romance.

Specials: Iron gates leading to a grand entrance with palm and fruit trees. Decorative fountain. Private parking area with 1 Parking space. Private veranda with dining and relaxing furniture in the terrace, sunbeds & umbrella. Outdoor day bed for two in the centre. Nespresso Machine. Outdoor rain shower. Pillow menu.





JUNIOR PRESIDENTIAL VILLA SEAFRONT

WITH PRIVATE HEATED POOL & GARDEN

Location: 1-st row in the exclusive Villa Area, Ground Floor

View: Direct Sea View

Size: Indoor: 67,5 sq.m., outdoor: 52,5 sq.m.

Layout: 1 sea view master bedroom & a stylish living room

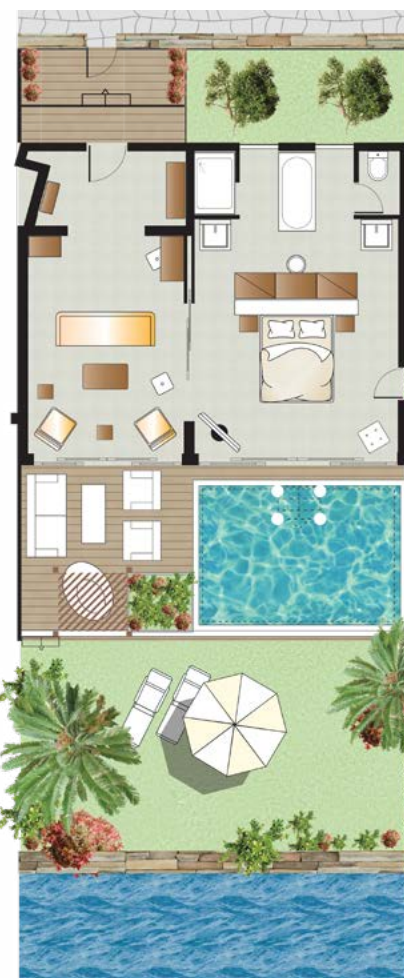
Sleeps: 2 adults + 1 child

Beds: 1 oversized King size bed set against a theatrical backdrop of traditional mini pots with direct sea view and with direct access to the pool

Bath: One luxurious en suite bathroom with an overflowing deep soaking hydromassage bathtub with aromatherapy and color therapy, 2 wash basins & a separate rain shower cabin. Two glass doors in the bathroom provide access to an outdoor landscaped area.

Pool: Private pool 23m², heated up to 25°C upon request with extra charge (90€ per day) with smooth current for exercising (upon request).

Specials: Private veranda with comfortable furniture in the terrace, romantic love seat in the garden, sunbeds & umbrella. Landscaped garden with direct access to the west Beach area. Pillow menu. Nespresso Machine





PRESIDENTIAL VILLA SEAFRONT WITH PRIVATE HEATED POOL & GARDEN

Location: 1-st row in the exclusive Villa Area, Ground Floor

View: Direct Sea View

Size: Indoor: 88 sq.m., outdoor: 52-60 sq.m.

Layout: 2 bedrooms, an entrance hall & a luxurious living room

Sleeps: 4 adults

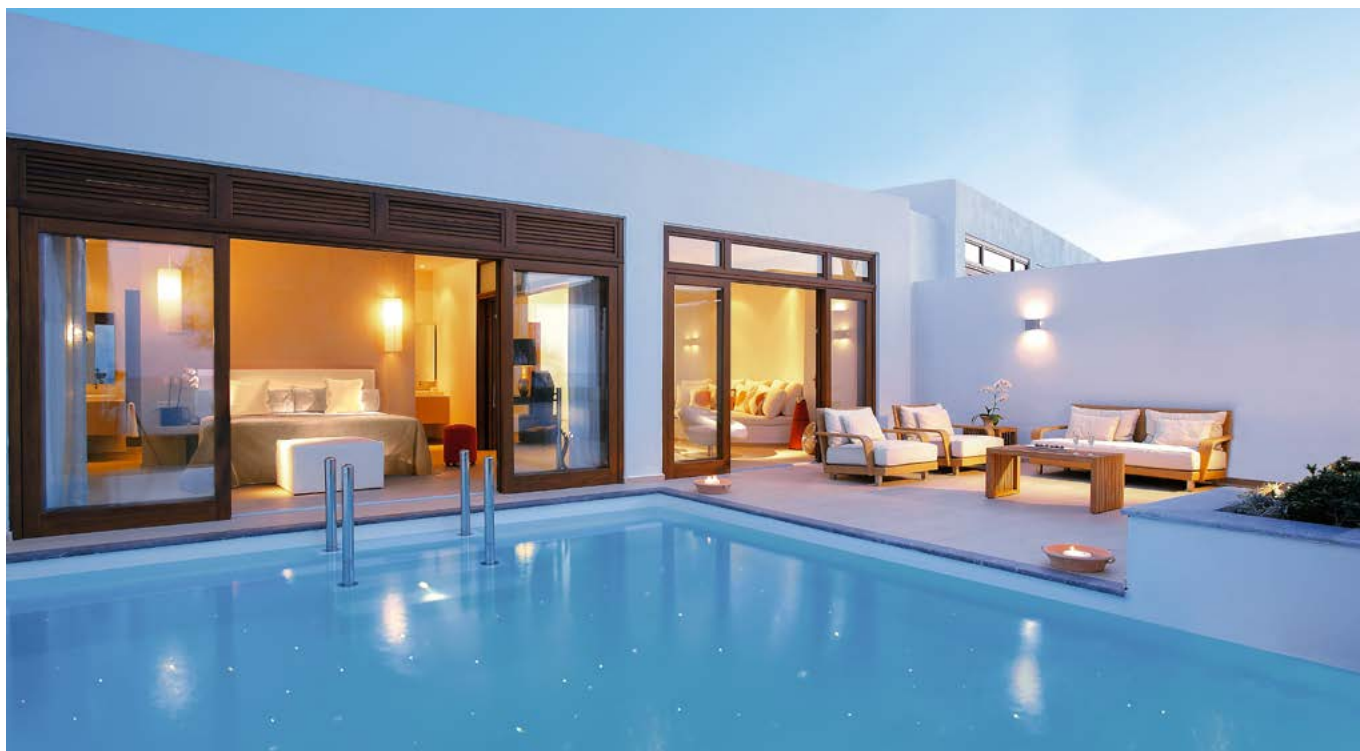
Beds: 1 oversized King size bed sea view with direct access to the private infinity pool & 2 single beds in the secondary room that leads to an outdoor landscaped yard

Bath: One luxurious en suite bathroom with a hydromassage bathtub with aromatherapy, 2 wash basins & a separate rain shower glass cabin. One bathroom with 1 washbasin & separate shower cabin.

Pool: Private pool 23m², heated up to 25°C upon request with extra charge (90€ per day) with smooth current for exercising (upon request)

Specials: Private veranda with comfortable furniture in the terrace, dining area, sunbeds & umbrella. Landscaped garden with direct access to the west Beach area. Pillow menu. Nespresso Machine.





THE GRAND BEACH RESIDENCE WITH 2 PRIVATE HEATED POOLS & GARDEN

Location: 1-st row in the exclusive Villa Area, Ground Floor

View: Direct Sea View

Size: Indoor: 155 sq.m., outdoor: 150 sq.m.

Layout: 4 bedrooms, 4 bathrooms, entrance hall, luxurious living room & living area

Sleeps: 8 adults

Beds: 1 king size bed set against a theatrical backdrop of coloured lanterns, 1 king size bed & 4 Single Beds.

Bath: One luxurious en suite bathroom with a hydromassage bathtub, with aromatherapy, 2 wash basins & a separate glass rain shower cabin. Second bathroom with 1 washbasin & separate shower cabin. Third luxurious sea view bathroom with a double stone washbasin, hydromassage bathtub, separate shower. Fourth bathroom with a noir washbasin & separate shower.

Pools: One private pool 23m² & one infinity private pool 17m², both with smooth current for exercising (upon request). Both pools are heated up to 25°C upon request with extra charge (90€ per day).

Specials: Private veranda with comfortable furniture in the terrace, dining area sunbeds & umbrella. Landscaped gardens with direct access to the west Beach area. Pillow menu. Nespresso machine.





THE ROYAL RESIDENCE

WITH PRIVATE HEATED POOL & EXTENSIVE GARDEN

Location: 1-st row in the exclusive Villa Area, Ground Floor

View: Direct Sea View

Size: Indoor: 311 sq.m., outdoor: 750 sq.m.

Layout: 1 level, 1 unit and a cave: 1 front open-plan area & an extravagant private "Cave" with stone laid floor and stone walls, spacious stylish living room with a big flat TV, dining area with handmade Italian wooden dining table, a fully equipped kitchen.

Sleeps: 4 adults

Beds: 1 oversized king size bed and 1 king size bed on a raised wooden floor

Bath: One luxurious en suite bathroom with hydromassage bathtub with aromatherapy, 2 wash basins & a separate glass rain shower cabin. Second bathroom with two stone washbasins, separate shower, a round sized hydromassage bathtub, shower, private sauna, massage bed & exercise machine.

Pools: Private pool 23m², heated up to 25°C upon request with extra charge (90€ per day) with smooth current for exercising (upon request).

Specials: Private terrace with seating arrangements, and a large garden, hanging over the sea with direct access to the Villas Beach area. Furnished with sun beds, umbrella, a Pavilion, an open-air lounge & an outdoor special dining area. Private entrance. Parking space. A 55" flat screen TV, a 65" flat screen in the second bedroom and a flat TV 65". Round hydromassage bathtub. Private sauna. Exercise machine. Massage bed. Fully equipped Kitchen. Staff quarters. Nespresso machine. Pillow menu.





THE GRAND ROYAL RESIDENCE

WITH 2 PRIVATE HEATED POOLS & EXTENSIVE GARDEN

Location: 1-st row in the exclusive Villa Area, Ground Floor

View: Direct Sea View **Size:** Indoor: 378 sq.m., outdoor: 802 sq.m.

Layout: 1 level, 2 units and a cave: 1 front open-plan area & an extravagant private "Cave" with stone laid floor and stone walls, spacious stylish living room with a big flat TV, dining area with handmade Italian wooden dining table, a fully equipped kitchen.

Sleeps: 6 adults

Beds: 1 King size bed set against a theatrical backdrop of coloured lanterns with direct sea view and with direct access to the pool, 1 king size bed and 1 oversized king size bed on a raised wooden floor

Bath: One luxurious en suite bathroom with an overflowing deep soaking hydromassage bathtub with aromatherapy and colour therapy, 2 wash basins & a separate rain shower cabin. Second bathroom with two stone washbasins, separate shower, private sauna, massage bed & exercise machine. Third luxurious en suite bathroom with a hydromassage bathtub with aromatherapy, 2 wash basins & a separate glass rain shower cabin.

Pools: 2 private pools 23m², heated up to 25°C upon request with extra charge (90€ per day), one with smooth current for exercising (upon request).

Specials: Private terrace with seating arrangements, and a large garden, hanging over the sea with direct access to the west Beach area. Furnished with sun beds, umbrella, a Pavilion, an open-air lounge & an outdoor special dining area. Private entrance. Parking space. A 55" flat screen TV, a 65" flat screen in the second bedroom, a flat TV 65" and a 65" flat screen TV in the third bedroom. Round hydromassage bathtub. Private sauna. Exercise Machine. Massage bed. Fully equipped Kitchen. Nespresso machine. Staff quarters. Pillow menu.

