



SEASIDE GLAMOUR. SUITES & VILLAS BOUTIQUE RETREAT





CARMEL

A GRECOTEL RESORT TO LIVE



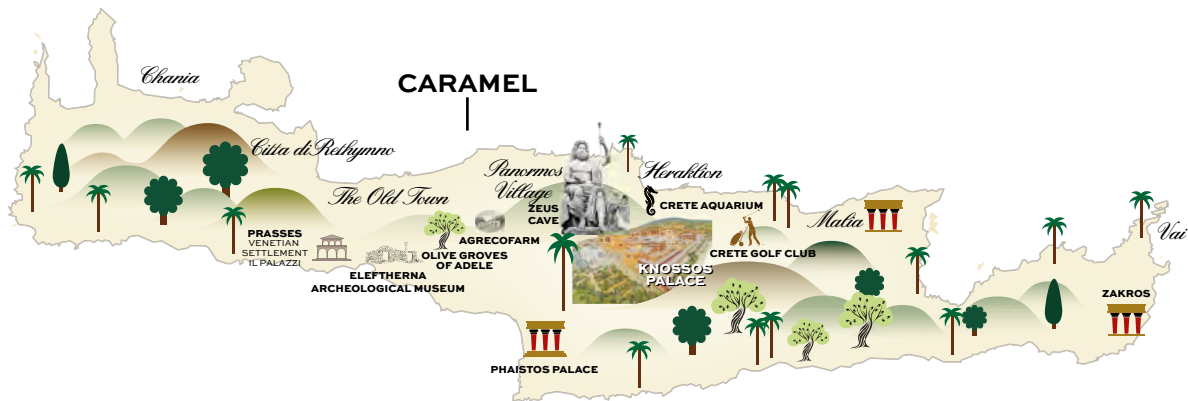
**A PRIVATE WORLD OF CANDID ALLURE, SEAMLESS ELEGANCE
AND PRISTINE PERSONALISED SERVICE.**

A luxurious and enchanting boutique resort, born out of a desire to create an idyllic beachfront haven true to the aristocratic Venetian era of Rethymno. Caramel is love at first sight, infused with a great sense of warmth, conviviality and indulgence.



CARMEL

A GRECOTEL RESORT TO LIVE



IDEAL FOR

All ages

LOCATION

Rethymnon, Crete. Rethymno town: 9 km • Airport of Heraklion: 78 km
• Airport of Chania: 76 km

NEWS 2025

Captivating new suites & villas with private pools. Enhanced décor with the signature Caramel style.

ACCOMMODATION

Total Rooms 67 • Suites 53 • Villas 14

BEACH & POOLS

Directly on a 300m sandy beach • 1 Large Seawater Pool with hydromassage

FEATURES

Elixir Wellness Center & Fitness room with Technogym cardio gym equipment • Grecoland Kids Club • Fashion Boutique & Mini Market
• Business Center • Library • TV Room

ACTIVITIES

• Watersports • Sports & Gymnastics • Biking

AWARDS

• TUV Austria Hellas • Top Quality 2019 by TUI • Holiday Check Recommendation 2022 by Holiday Check reviewers • Excellence Award 2023 by Tripadvisor • Travelife Gold 2021-2023 • TUI Umwelt Champion 2019 • TUI Holly 2019 Best Hotel Eastern Mediterranean • Guest Review Award 2019 Booking.com • Greek Breakfast by The Hellenic Chamber of Hotels • Green & Fair Hotel 2023 by TUI

MEAL PLANS

Breakfast

A stunning variety of choices, ranging from the lavishness of American-style buffet to the elegance of exclusive à la carte options with local

delicacies. Early & Late breakfast as well as In-room breakfast services are available upon request.

Halfboard

A well-tended half board concept offering a large variety of dishes and tastes in lavish breakfast and dinner buffets or choice of hotel's a la carte restaurant with credit allowance of 20 € per adult & 10 € per child, reservation required. Available for Suite accommodation.

The Dine Club Half-Board Programme

An exciting half board dining concept with many options and extra advantages, including credit in selected restaurants in GrecoTel Resorts around Crete and free dining for kids. Enjoy free breakfast and lunch or dinner, plus credit allowance in amazing venues. For every 7 nights stay, indulge in two free à la carte dinners, including the option of one in the famous Agreco Farm. Drinks & Beverages not included. Available for Villa Accommodation.

See more at caramel.grecotel.com/dineclub

RESTAURANTS & BARS

BREAKFAST

Caramel The Restaurant, Med. Buffet Restaurant

Show cooking, gourmet buffet with fitness food, Cretan options with traditional products and local herb teas. Early/Late Continental Breakfast.

LUNCH

Confetti Pool Lounges, Poolside Brasserie

An assortment of delicious Greek and International lunches, snacks, sandwiches and farm fresh salads. À la carte menu.

DINNER

Caramel The Restaurant, Med. Buffet Restaurant.

Mediterranean, vegetarian & international dishes.

Gourmet à la carte Restaurant, Med. à la carte Restaurant

Seafood & mouth-watering Mediterranean selections. Late dinner. Kids' Menu available

BARS

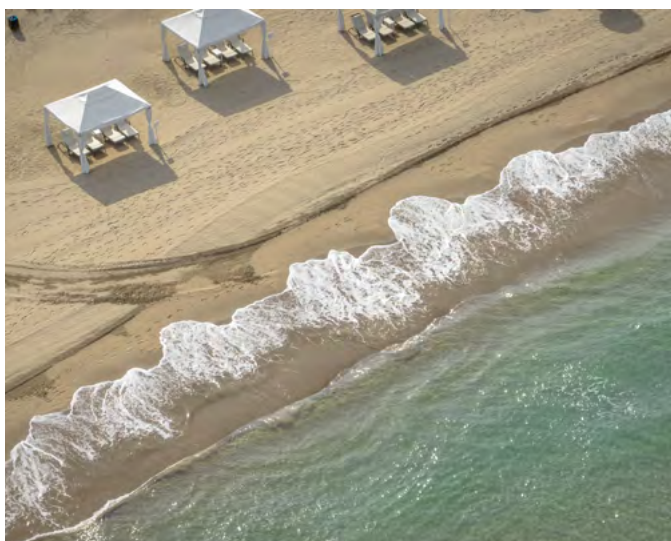
Panther Lobby Bar

Impressive lounges and terraces with stunning pool views.

Confetti Pool Lounges All day long

IN ALL RESTAURANTS Vegan / Vegetarian / Gluten Free options, as well as Vegan and BIO wines in all restaurants.

ROOM SERVICE 24hrs at an extra charge, on request.



NOTE: Restaurants are subject to availability and weather conditions, reservations required in all à la carte restaurants.

KIDS

Kids Go Free Children up to 12 years old enjoy free kids dining in the "Tasty Corner", free Grecoland kids' programme, GrecoTeens and outdoor creative activities.

Greco baby, 0-3 yrs. Pre-arrival order of baby equipment, baby food order. • Baby-sitting, extra charge

Grecoland Kids Club, 4-12 yrs. 6 times per week 10.00-18.00. Children under 4 yrs. must be supervised at all times by a parent or guardian.

Greco teens Activities, 13+ yrs. From mid June - mid September

Free Kids Dining, 3-12 yrs. The Dine Club offers exclusively to children up to 12 years an ALL IN-Dining experience: All Day favorite snacks at Grecoland (11:00 -17:00) Tasty corner lunch at Main restaurant (12.30-14.00) A La Carte kids' dining in designated restaurants with special kid's menu including juices & refreshments or credit allowance for regular menu orders.

SPA & WELLNESS

Spa Facilities One massage room with two massage beds • Beauty Salon • Gazebo Open-air Massage • Fitness room with Technogym cardio gym equipment • Body & Soul Elixirs • Massages & Therapies • Face Treatments • Special Therapies • For Two

Gym Operation hours: 07.00-20.00 Fitness room with Technogym equipment including: Treadmills, Bikes, Crossover machine, Leg cure/leg extension, Press and overhead press, Adductors, Shoulder press, Abdominal benches, Dorsals benches, Weights benches, Much fitness machine, Pegasus strength back machine, Technogym weights, Kettle belts.

RECREATION

Gymnastics Fitness room with Technogym cardio fitness equipment, Morning Gymnastics, Yoga, Pilates

Sports Table Tennis, Darts, Boccia. Extra charge: Professional motorized Watersports

Outside The Hotel Nearby: PADI Underwater Diving School, Mountain Bike Center, Horse Riding, Crete Golf Club (89 km). At nearby Grecotel Creta Palace: 2 Tennis AstroTurf Courts, coaching, practice, tournaments.

E-bike service Includes digital tour, GPS and other in-app services (extra costs apply). T&C: Cost depends on rental duration. The service will be available daily from 7 am - 11 pm. The rental procedure as well as the acceptance of the Terms & Conditions and the payment will be automated and completed by the guest.

Watersports Sailing, Waterskiing, Pedal Boats, Canoes, Banana & Rings, Wakeboard

Evening Entertainment Live Music Performances

ENVIRONMENTAL POLICY

• TUI Environment Champions • Travellife Gold award 2021-2023
• Waste Recycling • Recycling • Energy and water saving measures, ecological cleaning agents • Protection of endangered sea turtles Caretta-Caretta • In hotel Environmental Activities.

SERVICES

WiFi Free of charge full WiFi coverage in all hotel areas and guest rooms.

Grecotel Mobile App proposes a world of information regarding your stay, online-reservation at the à la carte restaurants and services in and out of the hotel.

24h WhatsApp Concierge Designated staff members are at call on WhatsApp, to assist guests on everything they may desire.

Multilingual personnel English, German, Russian, French, Greek.

Medical Services 24hr Medical cover, Doctor on call -extra charges may apply depending on guests' travel insurance. • Pharmacy at 500 m • Medical Centre at 500 m • Hospital at 9 km.

Transport Car rental & motorbike rental at the Reception • Bus stop outside the Hotel

Taxi Service on request • to Rethymnon, 9km • to Heraklion Airport, 78km • to Chania Airport, 76km.

Shopping "Sunstores" Market/Souvenir Shop

Money All major Credit Cards are accepted • ATM outside the hotel • Nearest Bank at 9 km

Voltage Current 220V.

Mobility Impaired Guests

Due to the hotel's layout, most departments and rooms are not accessible to persons with mobility problems.

Animals Dogs that weigh up to 8kg are allowed in selected villas with private gardens. Restrictions apply. Service animals are allowed to accompany their handler in all hotel premises. View pets policy at grecotel.com/pets-policy

Official Hotel Categorization Five star Resort

Contact details GR – 74 100 Adelianos Kampos, Rethymnon, Crete, TEL.: (+30) 28310 71803, E-mail: reservations.cb@grecotel.com



CARAMEL HOTEL MAP

- 1. Entrance
- 2. Parking
- 3. Reception
- 4. "Panther" Bar
- 5. Caramel The Restaurant
- 6. Beach Bar
- 7. Confetti Pool Lounges
- 8. A la carte Restaurant
- 9. "SunStores" Holiday Boutique
- 10. Main Pool
- 11. Outdoor Jacuzzi
- 12. Exit to road
- 13. Elixir Wellness Centre & Fitness Room

ACCOMMODATION CHART

All room types include:

- Mini-bar with international brands
- Complimentary tea & coffee facilities
- Nespresso bar concept in guest accommodation: Nespresso Machine with 2 complimentary pods per adult/ per day
- In-room safe
- Room service 24h, on request
- Laundry services
- Luxurious beds & linens
- Hairdryer
- Bathrobes & slippers
- Deluxe bathroom amenities
- Complimentary WiFi
- LCD TV

Additionally in all villas:

- Complimentary Full Set Bar in selected villas
- Pillow menu

ROOM TYPES	LOCATION	SIZE	SLEEPS	VIEW
Caramel Junior Suite	Main House, Atrium Wing	40m ²	2	Garden & Pool
Junior Suite Private Garden	Main House	40m ²	2+1	Garden
Junior Suite Sea View	Main House	28-35m ²	2	Sea
Family Suite Main House	Main House, Atrium Wing	50m ²	2+2	Garden & Parking
Deluxe Bungalow Suite	Garden Area	50-55m ²	2+1	Garden
Deluxe Bungalow Suite Private Pool	Garden Area	50-55m ²	2+1	Garden
Caramel Suite	Main House	50m ²	2	Sea
Caramel Maisonette	Garden Area	45m ²	2+1	Garden
2-Bedroom Caramel Villa	Garden Area	80m ²	4+1	Garden
2-Bedroom Beach Villa Seafront	Beachfront, Direct Access to the Sea	75m ²	4+1	Garden
2-Bedroom Caramel Villa Private Pool	Garden Area	65m ²	4+1	Garden
3-Bedroom Villa Private Pool & Garden	Garden Area	125m ²	6+1	Garden
3-Bedroom Luxury Villa with direct access to the beach	Beachfront, Direct Access to the Sea	135m ²	6+2	Sea
3 Bedroom Beach Villa Private Pool	Beachfront, Direct Access to the Sea	135m ²	6+1	Sea
4-Bedroom Beach Villa Seafront	Beachfront, Direct Access to the Sea	165m ²	8+1	Sea

ACCOMMODATION LAYOUTS & PHOTOS ARE SAMPLES AND MAY VARY DEPENDING ON THE POSITION WITHIN THE HOTEL. MEASUREMENTS ARE APPROXIMATE TO THE NEAREST m²

View more details & photos about facilities, services & room details online at caramel.grecotel.com



CARAMEL JUNIOR SUITE

Location: Main House. Atrium Wing, 1st & 2nd floor

View: Garden/Pool View

Size: Indoor: 40 sq.m., outdoor: 6-9 sq.m.

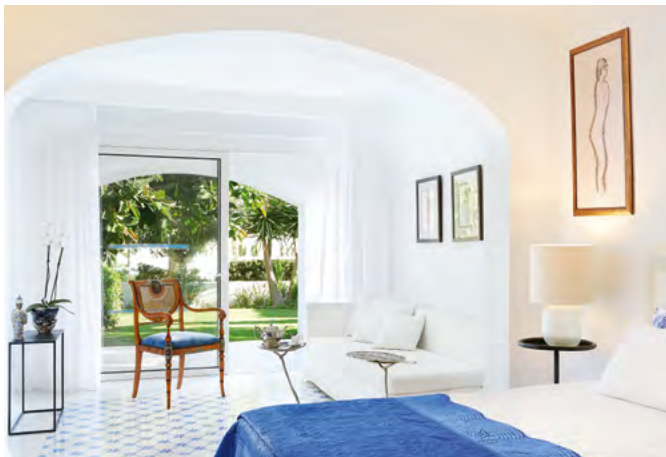
Layout: Open plan

Sleeps: 2 adults

Beds: One king size bed

Bath: One bathroom

Specials: Ample wardrobes. Large-sized balcony in selected suites.



JUNIOR SUITE PRIVATE GARDEN

Location: Main House. Ground floor

View: Garden View

Size: Indoor: 40 sq.m., outdoor: 7 sq.m.

Layout: Open plan

Sleeps: 2 adults + 1 child

Beds: One king size bed & 1 extra single bed

Bath: One bathroom

Specials: Private garden. A few steps away from the pool.



JUNIOR SUITE SEA VIEW

Location: Main House, 2nd floor, Prime Elevated Location

View: Garden View

Size: Indoor: 28-35 sq.m.

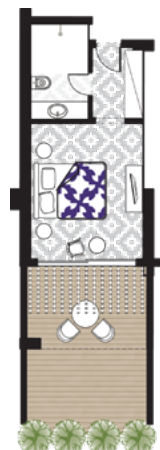
Layout: Open plan

Sleeps: 2 adults

Beds: One king size bed

Bath: One bathroom

Specials: Covered Balcony & Sun Terrace.



FAMILY SUITE MAIN HOUSE

Location: Main House. Atrium Wing, 1st & 2nd floor

View: Garden & Parking view

Size: Indoor: 50 sq.m., outdoor: 13-17 sq.m.

Layout: Open plan

Sleeps: 2 adults + 2 children

Beds: One king size bed & 2 extra single beds/sofa beds

Bath: One bathroom

Specials: Large balcony. Two marble bathrooms in selected suites.





DELUXE BUNGALOW SUITE

Location: Garden Area, Ground & 1st floor

View: Garden view

Size: Indoor: 50-55 sq.m., outdoor: 3-9 sq.m.

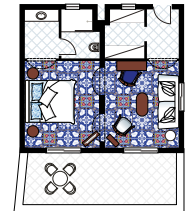
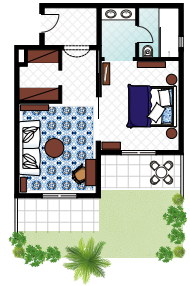
Layout: 1 Bedroom with combined living room, open plan layout or sliding door option

Sleeps: 2 adults + 1 child

Beds: One king size bed & 1 extra single bed

Bath: One bathroom

Specials: Ample wardrobe.



DELUXE BUNGALOW SUITE PRIVATE POOL

Location: Garden Area, Ground & 1st floor

View: Garden view

Size: Indoor: 50-55 sq.m., outdoor: 3-9 sq.m.

Layout: 1 Bedroom with combined living room, open plan layout or sliding door option

Sleeps: 2 adults + 1 child

Beds: One king size bed & 1 sofa bed/single bed

Bath: One bathroom

Pool: Private swimming pool 15 sq.m.

Specials: Handmade floor tiles. Ample wardrobes.



CARAMEL SUITE

Location: Main House. 2nd floor

View: Sea View

Size: Indoor: 50 sq.m., outdoor: 20 sq.m.

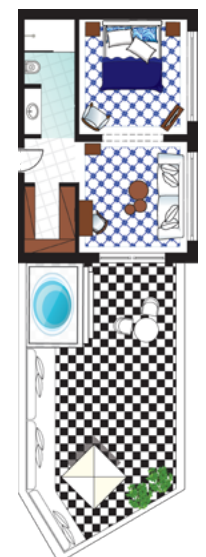
Layout: Open plan suite

Sleeps: 2 adults

Beds: One king size bed

Bath: One bathroom

Specials: Open air Hydromassage bathtub. Unique suite with exclusive design. Large private terrace. Ample wardrobe.





CARAMEL MAISONETTE

Location: Garden area, Ground floor

View: Garden View

Size: Indoor: 45 sq.m., outdoor: 6-9 sq.m.

Layout: Split level. Open plan maisonette.

Sleeps: 2 adults + 1 child

Beds: One king size bed & 1 sofa bed/single bed

Bath: One bathroom

Specials: Wooden staircase



2-BEDROOM CARAMEL VILLA

Location: Garden area

View: Garden View

Size: Indoor: 80 sq.m., outdoor: 4-10 sq.m.

Layout: 1-level or split-level layout. Two Master Bedroom suites.

Sleeps: 4 adults + 1 child

Beds: Two master king size beds & 1 optional extra single bed

Bath: Two or one bathrooms

Specials: Top floor Private open air hydromassage bathtub in selected villas. Private gazebo on the beach. Hand-made floor tiles.





2-BEDROOM BEACH VILLA SEAFRONT

Location: Beachfront, Direct Access to the Sea.

View: Sea View

Size: Indoor: 75 sq.m., outdoor: 4-10 sq.m.

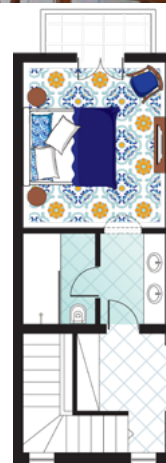
Layout: Split-level layout. Two Master Bedroom suites. Open Plan ground floor.

Sleeps: 4 adults + 1 child

Beds: One king size bed, 1 double master king size bed & 1 optional extra single bed

Bath: Two bathrooms

Specials: Private gazebo in front of the villa. Direct access to the beach. Hand-made floor tiles. Ample wardrobes. Sliding doors on the ground floor in selected villas.



2-BEDROOM CARAMEL VILLA PRIVATE POOL

Location: Garden Area

View: Garden view

Size: Indoor: 65 sq.m., outdoor: 19-25 sq.m.

Layout: One Master Bedroom Suite & en-suite living area. One double bedroom

Sleeps: 4 adults + 1 child

Beds: One master king size bed & 1 optional extra single bed

Bath: Two bathrooms

Pool: Private swimming pool 15 sq.m. (not heated)

Specials: Private gazebo on the beach. Hand-made floor tiles. Two entrances.





3-BEDROOM VILLA PRIVATE POOL & GARDEN

Location: Garden Area

View: Garden view

Size: Indoor: 125 sq.m., outdoor: 20-30 sq.m.

Layout: Split-level layout. Two Master Bedroom Suites. One double bedroom. Separate Living Area.

Sleeps: 6 adults + 1 child

Beds: Two king size beds, 1 double master king size bed & 1 optional extra single bed

Bath: Two bathrooms

Pool: Private swimming pool 15 sq.m.

Specials: Top floor open air hydromassage bathtub. Private gazebo on the beach. Hand-made floor tiles.



3-BEDROOM LUXURY VILLA WITH DIRECT ACCESS TO THE BEACH

Location: Beachfront, Direct Access to the Beach

View: Sea view

Size: Indoor: 105 sq.m., outdoor: 4-10 sq.m.

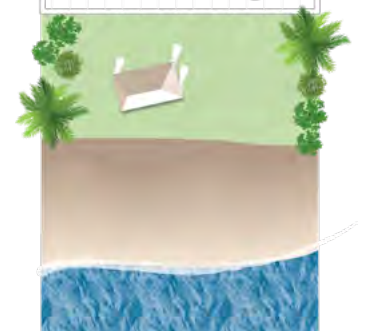
Layout: Split-level layout. Two Master Bedroom Suites. One double bedroom. Separate Living Area.

Sleeps: 6 adults + 2 children

Beds: Three king size beds & 2 optional extra single beds

Bath: Two bathrooms

Specials: Direct access to the beach. Private gazebo on the beach. Hand-made floor tiles.





3 BEDROOM BEACH VILLA PRIVATE POOL

Location: Beachfront, Direct Access to the Sea

View: Sea view

Size: Indoor: 135 sq.m., outdoor: 8-16 sq.m.

Layout: Split-level layout. Three Luxurious Double Bedrooms. Separate living area. Connecting door.

Sleeps: 6 adults + 1 child

Beds: Three king size beds & 1 optional extra single bed

Bath: Two bathrooms

Pool: Private swimming pool 15 sq.m.

Specials: Private gazebo in front of the villas. Hand-made floor tiles.





4-BEDROOM BEACH VILLA SEAFRONT

Location: Beachfront, Direct Access to the Sea

View: Sea view

Size: Indoor: 165 sq.m., outdoor: 8-16 sq.m.

Layout: Split-level layout. One Master Bedroom Suite with en suite living area. Three Luxurious Double Bedrooms. One separate living area. Connecting door.

Sleeps: 8 adults + 1 child

Beds: Three king size beds, one double master king size bed & 1 optional extra single bed

Bath: Three bathrooms

Specials: Top floor open air hydro-massage bathtub. Private gazebo in front of the villa. Hand-made floor tiles.

