

# REEF OASIS

BLUE BAY

## REEF OASIS BLUE BAY



EL BASHA BAY, SHARM EL SHEIKH, SOUTH SINAI, EGYPT



+ 20 (69) 3602900

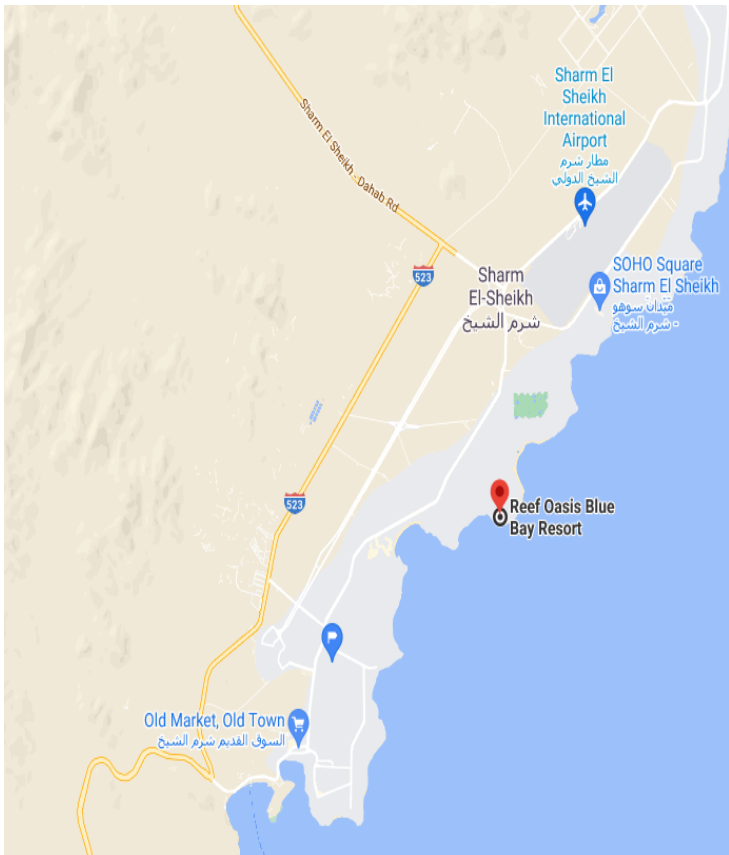


[info@reefoasis.com.eg](mailto:info@reefoasis.com.eg)

The Hotel Management has the right to make any changes to the above concept according to weather conditions, hotel occupancy, guests requests and force majeure, without prior notice.



# LOCATION



Date of Opening: April 2007

Latest renovation: N/A (Preventive Maintenance)

Rooms: 698

Total Area: 190.601 m2

GPS: 27.920801681399624, 34.36172492642465

Website: <https://www.reefoasisresorts.com>

Sharm El Sheikh International Airport: 05 km

Shopping Centers: Na'ama Bay 8 km / IL Mercato 20 km

Sharm El Sheikh Old Market: 16 km

Beach length: 500m; Jetty 7m

Number of buildings: 30 clusters (2 floors)

Elevators: 4

Internet: Free WI FI in Rooms and public areas

The Reef Oasis Blue Bay Resort is a beautiful and welcoming star property, ideally situated on the Beach overlooking the amazing Red Sea. Appealing to couples and families alike, the hotel offers a wide variety of services and facilities, which include a range of sports activities, numerous restaurants and bars, with evening entertainment, a Diving Centre, Spa Centre, 5 swimming pools and an Aqua Park.

EL BASHA BAY, SHARM EL SHEIKH, SOUTH SINAI, EGYPT



+ 20 (69) 3602900



[info@reefoasis.com.eg](mailto:info@reefoasis.com.eg)

The Hotel Management has the right to make any changes to the above concept according to weather conditions, hotel occupancy, guests requests and force majeure, without prior notice.



## ROOM TYPES ALLOCATION

Rooms	Standard /Preferred	Superior Room	Premium Room	Deluxe Room	Family Room	Executive Room	Honeymoon Suite	Executive Suite
Area m2 (Inc. Terrace & Bath)	30 – 40 M2	35 – 45 M2	42 – 48 M2	40 – 48 M2	62	45	63 – 93 M2	63 – 90 M2
Max. Occupancy	2	3	3	3	4	2	2	4
Panorama Sea View							3	
Premium Location			27					
Pool View				102	18	4		
Garden View		290			49	38		
Court View	163							
King Size Bed	114	80	8	41	67	44	3	1
Twin Bed	45	193	19	52	67			1
Triple Room		13		9				
Single Room	4							
Handicapped Room		2						
Bathroom	✓	✓	✓	✓	✓	✓	✓	✓
Rooms with Balcony / Terrace	148	285	27	102	67	44	3	2
Bedroom	1	1	1	1	2	1	1	2
Living Room							✓	✓
Hair Dryer	✓	✓	✓	✓	✓	✓	✓	✓
Telephone	✓	✓	✓	✓	✓	✓	✓	✓
Air Conditioning	✓	✓	✓	✓	✓	✓	✓	✓
Radio Via Satellite TV	✓	✓	✓	✓	✓	✓	✓	✓
Satellite TV	✓	✓	✓	✓	✓	✓	✓	✓
Remote Control	✓	✓	✓	✓	✓	✓	✓	✓
Mini Bar	✓	✓	✓	✓	✓	✓	✓	✓
Safety Box	✓	✓	✓	✓	✓	✓	✓	✓
Kettle	✓	✓	✓	✓	✓	✓	✓	✓
Magnifying Mirror	✓	✓	✓	✓	✓	✓	✓	✓

EL BASHA BAY, SHARM EL SHEIKH, SOUTH SINAI, EGYPT



+ 20 (69) 3602900



[info@reefoasis.com.eg](mailto:info@reefoasis.com.eg)

The Hotel Management has the right to make any changes to the above concept according to weather conditions, hotel occupancy, guests requests and force majeure, without prior notice.





# ROOMS



## STANDARD ROOM

### SIZE / LOCATION

30 – 35 M2

### OCCUPANCY

One Adult / One Adult + child /Two Adults

### FACILITIES / DESCRIPTION

- ✓ King size or Twin size beds
- ✓ In-Room Safety deposit box
- ✓ Mini Bar
- ✓ Individually controlled air-conditioning
- ✓ International direct dial telephone
- ✓ International satellite T.V channels
- ✓ Water and tea & coffee making facilities
- ✓ Fully equipped bathroom with separate shower
- ✓ Full bathroom amenities.
- ✓ Located at the 5000 and 7000 block



## SUPERIOR ROOM

### SIZE / LOCATION

35 – 40 M2

### OCCUPANCY

One Adult / One Adult + child /Two Adults  
/ Three Adults (03<sup>rd</sup> Person on Extra bed)

### FACILITIES / DESCRIPTION

- ✓ King size or Twin size beds
- ✓ In-Room Safety deposit box
- ✓ Mini Bar
- ✓ Individually controlled air-conditioning
- ✓ International direct dial telephone
- ✓ International satellite T.V channels
- ✓ Water and tea & coffee making facilities
- ✓ Seating area
- ✓ Fully equipped bathroom with separate shower
- ✓ Full bathroom amenities
- ✓ Garden View

EL BASHA BAY, SHARM EL SHEIKH, SOUTH SINAI, EGYPT



+ 20 (69) 3602900



[info@reefoasis.com.eg](mailto:info@reefoasis.com.eg)

The Hotel Management has the right to make any changes to the above concept according to weather conditions, hotel occupancy, guests requests and force majeure, without prior notice.





## DELUXE ROOM

### SIZE / LOCATION

35 – 40 M2

### OCCUPANCY

One Adult / One Adult + child /Two Adults / Three Adults (03<sup>rd</sup> Person on

### FACILITIES / DESCRIPTION

- ✓ King Size or Twin Size Beds
- ✓ In-Room safety deposit box
- ✓ Seating area with coffee table
- ✓ Mini Bar
- ✓ Water and tea & coffee making facilities
- ✓ International direct-dial telephone
- ✓ Individual controlled air-conditioning
- ✓ Possibility in adding sofa bed/extra bed
- ✓ LCD TV with International Satellite TV Channels
- ✓ Fully equipped bathroom with separate shower
- ✓ Pool View



## PREMIUM ROOM

### SIZE / LOCATION

35 – 40 M2

### OCCUPANCY

One Adult / One Adult + child /Two Adults / Three Adults (03<sup>rd</sup> Person on Extra bed)

### FACILITIES / DESCRIPTION

- ✓ King Size or Twin Size Beds
- ✓ In-Room safety deposit box
- ✓ Seating area with coffee table
- ✓ Mini Bar
- ✓ Water and tea & coffee making facilities
- ✓ International direct-dial telephone
- ✓ Individual controlled air-conditioning
- ✓ Possibility in adding sofa bed/extra bed
- ✓ LCD TV with International Satellite TV Channels
- ✓ Fully equipped bathroom with separate shower
- ✓ Premium Location

EL BASHA BAY, SHARM EL SHEIKH, SOUTH SINAI, EGYPT



+ 20 (69) 3602900



[info@reefoasis.com.eg](mailto:info@reefoasis.com.eg)

The Hotel Management has the right to make any changes to the above concept according to weather conditions, hotel occupancy, guests requests and force majeure, without prior notice.





## **FAMILY ROOM**

### **SIZE / LOCATION**

62 M2

### **OCCUPANCY**

Minimum 2 adults+2 children and  
Maximum 4 adults

### **FACILITIES / DESCRIPTION**

- ✓ In-Room Safety deposit box in master bedroom
- ✓ Individually controlled air-conditioning
- ✓ International direct dial telephone
- ✓ Mini Bar
- ✓ Water and tea & coffee making facilities
- ✓ Master bedroom with balcony or terrace
- ✓ Children's room with window only
- ✓ LCD TV with International Satellite TV Channels
- ✓ Fully equipped bathroom with bath tub for the master bedroom
- ✓ Upgraded bathroom amenities
- ✓ Master bedroom with king size bed and bathroom
- ✓ Children's room with twin beds and bathroom

## **EXECUTIVE ROOM**

### **SIZE / LOCATION**

45 M2

### **OCCUPANCY**

Minimum and maximum Occupancy 2  
adults

### **FACILITIES / DESCRIPTION**

- ✓ King-size bed
- ✓ In-Room Safety deposit box
- ✓ Seating area
- ✓ Mini Bar
- ✓ Individually controlled air-conditioning
- ✓ Water and tea & coffee making facilities
- ✓ LCD TV with International Satellite TV Channels
- ✓ International direct dial telephone
- ✓ Writing Desk
- ✓ Fully equipped bathroom with bath tub and separate shower
- ✓ Upgraded bathroom amenities
- ✓ Elegantly designed

EL BASHA BAY, SHARM EL SHEIKH, SOUTH SINAI, EGYPT



+ 20 (69) 3602900



[info@reefoasis.com.eg](mailto:info@reefoasis.com.eg)

The Hotel Management has the right to make any changes to the above concept according to weather conditions, hotel occupancy, guests requests and force majeure, without prior notice.







## HONEYMOON SUITE

### SIZE / LOCATION

63 – 93 M2

### OCCUPANCY

Maximum 2 Adults only (no children allowed)

### FACILITIES / BENEFITS / DESCRIPTION

- ✓ The living room has a dining area, separate bar area and seating area with coffee table
- ✓ Panoramic sea view terrace for relaxing with two chairs & a coffee table
- ✓ Master Bed Room with panoramic sea view terrace with fully equipped dressing room and seating area
- ✓ An ultra –luxurious bathroom with corner Jacuzzi with sea view, separate shower cabin, seating bench, two basins, separate toilet and full vanity unit.
- ✓ In-Room Safety deposit box, Individually controlled air-conditioning, International direct dial telephone, LCD TV with International satellite T.V channels, DVD Player, Radio & Alarm Clock, Writing Desk, Iron & Ironing Board
- ✓ VIP Upgraded bathroom amenities
- ✓ WI FI in the Room
- ✓ Daily refilling of mini bar with soft drinks
- ✓ Water and tea & coffee making facilities
- ✓ Turn down Service
- ✓ Early Check in: Subject to availability
- ✓ Late Check-out: Subject to availability
- ✓ VIP Amenities in Suite upon arrival (Fresh Fruits & Cookies)
- ✓ In room breakfast upon request: once per stay

EL BASHA BAY, SHARM EL SHEIKH, SOUTH SINAI, EGYPT



+ 20 (69) 3602900



[info@reefoasis.com.eg](mailto:info@reefoasis.com.eg)

The Hotel Management has the right to make any changes to the above concept according to weather conditions, hotel occupancy, guests requests and force majeure, without prior notice.





## FACILITIES / BENEFITS / DESCRIPTION

### SIZE / LOCATION

83 M2 – 93 M2

### OCCUPANCY

Up to 4 adults

## FACILITIES / DESCRIPTION

- ✓ Fully equipped 2 bed Room Suite on 1st floor with private entrance, a large terrace with tables and chairs and sun loungers for entertaining.
- ✓ Comfortable living room with an elegant dining area
- ✓ Kitchenette with fridge freezer, electric oven top and microwave.
- ✓ 1 King Size Bed Room with a separate bathroom
- ✓ Children's Room with twin beds and a separate bathroom
- ✓ Safety Deposit Box
- ✓ LCD TVs with International satellite T.V channels
- ✓ Individually controlled air conditioning
- ✓ Spacious Private Terrace with Seating area
- ✓ WI FI in the Room
- ✓ Daily refilling of Mini bar with Soft Drinks and Beer
- ✓ Water and Tea & Coffee making facilities
- ✓ Turn down Service
- ✓ Early Check in: Subject to availability
- ✓ Late Check-out: Subject to availability
- ✓ One Laundry Bag per week - Dry cleaning is excluded
- ✓ VIP Amenities in Suite upon arrival (Fresh Fruits & Cookies)

EL BASHA BAY, SHARM EL SHEIKH, SOUTH SINAI, EGYPT



+ 20 (69) 3602900



[info@reefoasis.com.eg](mailto:info@reefoasis.com.eg)

The Hotel Management has the right to make any changes to the above concept according to weather conditions, hotel occupancy, guests requests and force majeure, without prior notice.





## RECREATION FACILITIES



The Hotel offers 4 swimming pools all with different themes; Relax, Infinity, Leisure pool with waterslides and a Heated Pool in winter months, along with a Kids Pool located in the Mini Club.

Name	Relax Pool	Leisure Pool	Infinity pool	Diving pool	Kids pool	Beach
Outdoor	✓	✓	✓	✓	✓	✓
Indoor						
Sea water						✓
Fresh Water	✓	✓	✓	✓	✓	
Depth						
Ground M2	2,461 M2	1,692 M2	1,538 M2	300 M2	100 M2	8,750 M2
Water M3	3, 200 M3	2,200 M3	2000 M3	600 M3	50 M3	
Heated			✓			
Open Air Jacuzzi	✓	✓	✓			✓
Depth in Cm	120 - 150	120 - 150	120 - 150	150 - 300	45 - 50	
Showers in Area	✓	✓	✓	✓	✓	✓
Umbrellas	✓	✓	✓	✓	✓	✓
Towel Center	✓	✓	✓			
Number of Sun bed	120	140	130	16		800
No Of Pools	1	1	1	1	2	2
Adults Only	✓					
No Of Umbrellas	35	40	40	4		175

EL BASHA BAY, SHARM EL SHEIKH, SOUTH SINAI, EGYPT



+ 20 (69) 3602900



[info@reefoasis.com.eg](mailto:info@reefoasis.com.eg)

The Hotel Management has the right to make any changes to the above concept according to weather conditions, hotel occupancy, guests requests and force majeure, without prior notice.



# HOTEL FOOD & BEVERAGE CONCEPT



National & International Cuisine

Snacks Available during the day at selected times

6 Bars around the Resort

3 Buffet Restaurants & 3 A La Carte Restaurants

Local Alcoholic Cocktails & Non-Alcoholic Cocktails Served at various bars

Live Musicians on selected evenings

EL BASHA BAY, SHARM EL SHEIKH, SOUTH SINAI, EGYPT



+ 20 (69) 3602900



[info@reefoasis.com.eg](mailto:info@reefoasis.com.eg)

The Hotel Management has the right to make any changes to the above concept according to weather conditions, hotel occupancy, guests requests and force majeure, without prior notice.



# Reef Oasis Blue Bay All Inclusive Concept

## Food & Beverage:

- ✚ 'Bay view' Restaurant serving breakfast, lunch and dinner in buffet style.
- ✚ 'Al Dente' Italian A La Carte Restaurant: Some items are with an extra charge (reservation is required).
- ✚ 'Fishermans' Seafood A La Carte Restaurant: with an extra charge (reservation is required)
- ✚ Beach Bar: Snacks are served at selected times.
- ✚ 'Le Romantique' French A La Carte Restaurant: with an extra charge (reservation is required)
- ✚ Leisure Pool Bar: Snacks are served at selected times of the day.
- ✚ Horizon Pool Bar: Serving pizza after the lunch service
- ✚ 'The Pub' open 24 hours: Snacks are served at selected times of the day.
- ✚ 'Piano Bar' open with an extra charge.
- ✚ Local varieties of alcoholic and non-alcoholic beverages.

## Chargeable Food & Beverage:

- ✚ All bottled drinks
- ✚ All Imported alcoholic beverages

## Room Facilities:

- ✚ Water with tea & coffee facilities
- ✚ Bathrobe and Slippers in Executive Rooms
- ✚ In room safety deposit box
- ✚ Free Wi-Fi

## Recreation Activities:

### For Children;

- ✚ Mini Club
- ✚ Playground

### For Adults;

- ✚ Waterslides
- ✚ Gym
- ✚ Spa & Wellness Centre with charge
- ✚ Variety of day time activities including aerobics and water aerobics
- ✚ Live music on selected evenings

## Other Chargeable Services:

- ✚ Massages
- ✚ Spa Treatments
- ✚ Scuba Diving
- ✚ Shops
- ✚ Valet Services – Laundry and Dry Cleaning
- ✚ Telephone Calls
- ✚ Doctor's Fees
- ✚ Limousine Service
- ✚ Any other service that is not specified in the All Inclusive Concept







## "BAYVIEW" RESTAURANT

Capacity	INDOOR/A.C. : 410 Seat		OUTDOOR : 110 Seat	
Breakfast Buffet:	Assorted fruit juices plus a selection of freshly brewed tea and coffee. Freshly baked selection croissants, Danish pastries, donuts, tarts, brioches, assorted rolls, loaves and French sticks (white, brown, seeded and whole grain), pancakes & French toast are available and served with a selection of condiments including chocolate sauce, syrup and honey. Assorted yogurts (plain, fruit, and light), assorted fruit compotes and a selection of jams and honey are available. A variety of cheese and cold cuts with a selection of fresh seasonal vegetables, salads, pickles and olives is on offer. A selection of cereals, including plain, chocolate, honey & whole grain crisps with hot & cold milk, muesli & porridge. Experience the traditional Egyptian breakfast of Falafel, Foul with condiments, feta cheese & belila porridge. A variety of fresh seasonal fruits. From the Egg station; a choice of omelet, Spanish omelet or fried eggs. From the hot buffet; grilled vegetables, baked beans, grilled beef & chicken sausages, breakfast potatoes, scrambled eggs, hard and soft boiled eggs.			
Lunch Buffet:	A selection of freshly prepared salads with a choice of dressings. At the cold buffet a selection of antipasti, mezzes and seasonal salads will be available. A variety of cold cuts and cheeses with an array of pickles and olives is also on offer. A selection of freshly baked rolls, loaves and baguettes along with Egyptian flat bread. At the hot section; homemade soup & consommé. A selection of international hot dishes along with special local dishes including dietary and vegetarian choices. From the Italian corner; a selection of Italian pastas with traditional homemade sauces. From the grill; a selection of fish, meat or chicken will be grilled a la minute and served with sautéed vegetables, a choice of potatoes and popular sauces. Pastry and fresh fruits; a selection of international and local pastries with a choice of fresh fruits, cut by our chefs, along with fruit salads			
Dinner Buffet:	A selection of freshly prepared salads with a choice of dressings. At the cold buffet a selection of Antipasti, mezzes and seasonal salads will be available. A variety of cold cuts and cheeses with an array of pickles and olives is also on offer. A selection of freshly baked rolls, loaves and baguettes along with Egyptian flat bread. At the hot section; homemade soup & consommé. A selection of international hot dishes along with special local dishes including dietary and vegetarian choices. From the Carving station; a daily choice from meat, poultry or fish, served with sauces and garlic sautéed baked and fried potatoes. From the pasta corner; a selection of Italian pastas with traditional homemade sauces. From the grill; a selection of fish, meat or chicken grilled a la minute and served with sautéed vegetables, a choice of potatoes and popular sauces. Pastry and fresh fruits; a selection of international and local pastries with a choice of fresh fruits along with fruit salads.			
Table Service	From the Bar: Coffee and tea, along with a choice of soft drinks and juices, local beer, local wine and a variety of local alcoholic drinks are served within the concept. All bottled drinks and imported Alcohol is subject to charge.			
SERVICE HOURS	Breakfast 07:00 – 10:30		Lunch 12:30 – 15:00	
			Dinner 18:30 – 21:30	
DRESSCODE	Casual			

EL BASHA BAY, SHARM EL SHEIKH, SOUTH SINAI, EGYPT



+ 20 (69) 3602900



[info@reefoasis.com.eg](mailto:info@reefoasis.com.eg)

The Hotel Management has the right to make any changes to the above concept according to weather conditions, hotel occupancy, guests requests and force majeure, without prior notice.





## " SUNSET COURT" RESTAURANT

Reservation is required

Capacity	INDOOR/A.C.: 100 Seat	OUTDOOR: 120 Seat
Breakfast Buffet:	Assorted fruit juices plus a selection of freshly brewed tea and coffee. Freshly baked selection croissants, Danish pastries, donuts, tarts, brioches, assorted rolls, loaves and French sticks (white, brown, seeded and whole grain), fresh Belgian waffles, pancakes & French toast are available and served with a selection of condiments including chocolate sauce, syrup and honey. Assorted yogurts (plain, fruit, and light), assorted fruit compotes and a selection of jams and honey are available. A variety of cheese and cold cuts with a selection of fresh seasonal vegetables, salads, pickles and olives is on offer. A selection of cereals, including plain, chocolate, honey & whole grain crisps with hot & cold milk, muesli & porridge. Experience the traditional Egyptian breakfast of Falafel, Foul with condiments, feta cheese & belila porridge. A variety of fresh seasonal fruits. From the Egg station; a choice of omelet, Spanish omelet or fried eggs. From the hot buffet; grilled vegetables, baked beans, grilled beef & chicken sausages, breakfast potatoes, scrambled eggs, hard and soft boiled eggs.	
Dinner Buffet:	A selection of freshly prepared salads with a choice of dressings. At the cold buffet a selection of Antipasti, mezzes and seasonal salads will be available. A variety of cold cuts and cheeses with an array of pickles and olives is also on offer. A selection of freshly baked rolls, loaves and baguettes along with Egyptian flat bread. Homemade soup & consommé. From the Indian Tandoori Corner; a selection of favorite Indian dishes with aromatic rice. From the Middle Eastern Charcoal Grill; a selection of fish, meat or chicken grilled a la minute and served with sautéed vegetables, a choice of potatoes and popular sauces. From the Asian Wok Corner; a selection of meat, chicken, fish & vegetable stir-fried dishes accompanied with traditional noodles and rice. Pastry and fresh fruits; a selection of international and local pastries with a choice of fresh fruits along with fruit salads.	
From the Bar:	Coffee and tea, along with a choice of soft drinks and juices, local beer, local wine and a variety of local alcoholic drinks are served within the concept. All bottled drinks and imported Alcohol is subject to charge.	
Service Hours:	Breakfast 07:00 – 10:00	Dinner 18:30 – 21:30
DRESSCODE	Casual	

EL BASHA BAY, SHARM EL SHEIKH, SOUTH SINAI, EGYPT



+ 20 (69) 3602900



[info@reefoasis.com.eg](mailto:info@reefoasis.com.eg)

The Hotel Management has the right to make any changes to the above concept according to weather conditions, hotel occupancy, guests requests and force majeure, without prior notice.





## " SEA BREEZE" RESTAURANT

Capacity	INDOOR/A.C. : 410 Seat	OUTDOOR : 110 Seat
Breakfast Buffet:	Assorted fruit juices plus a selection of freshly brewed tea and coffee. Freshly baked selection croissants, Danish pastries, donuts, tarts, brioches, assorted rolls, loaves and French sticks (white, brown, seeded And whole grain), pancakes & French toast are available and served with a selection of condiments including chocolate sauce, syrup and honey. Assorted yogurts (plain, fruit, and light), assorted fruit compotes and a selection of jams and honey are available. A variety of cheese and cold cuts with a selection of fresh seasonal vegetables, salads, pickles and olives is on offer. A selection of cereals, including plain, chocolate, honey & whole grain crisps with hot & cold milk, muesli & porridge. Experience the traditional Egyptian breakfast of Falafel, Foul with condiments, feta cheese & belila porridge. A variety of fresh seasonal fruits. From the Egg station; a choice of omelet, Spanish omelet or fried eggs. From the hot buffet; Grilled vegetables, baked beans, grilled beef & chicken sausages, breakfast potatoes, scrambled eggs, hard and soft boiled eggs.	
Lunch Buffet:	A selection of freshly prepared salads with a choice of dressings. At the cold buffet a selection of Antipasti, mezzes and seasonal salads will be available. A variety of cold cuts and cheeses with an array of pickles and olives is also on offer. A selection of freshly baked rolls, loaves and baguettes along with Egyptian flat bread. At the hot section; homemade soup & consommé. A selection of international hot dishes along with special local dishes including dietary and vegetarian choices. From the Italian corner; a selection of Italian pastas with traditional homemade sauces. From the grill; a selection of fish, meat or chicken grilled a la minute and served with sautéed vegetables, a choice of potatoes and popular sauces. Pastry and fresh fruits; a selection of international and local pastries with a choice of fresh fruits along with fruit salads	
Dinner Buffet:	A selection of freshly prepared salads with a choice of dressings. At the cold buffet a selection of Antipasti, mezzes and seasonal salads will be available. A variety of cold cuts and cheeses with an array of pickles and olives is also on offer. A selection of freshly baked rolls, loaves and baguettes along with Egyptian flat bread. At the hot section; homemade soup & consommé. A selection of international hot dishes along with special local dishes including dietary and vegetarian choices. From the Carving station; a daily choice from meat, poultry or fish, served with sauces and garlic sautéed baked and fried potatoes. From the pasta corner; a selection of Italian pastas with traditional homemade sauces. From the grill; a selection of fish, meat or chicken grilled a la minute and served with sautéed vegetables, a choice of potatoes and popular sauces. Pastry and fresh fruits; a selection of international and local pastries with a choice of fresh fruits along with fruit salads.	
Table Service	From the Bar: Coffee and tea, along with a choice of soft drinks and juices, local beer, local wine and a variety of local alcoholic drinks are served within the concept. All bottled drinks and imported Alcohol is subject to charge.	
SERVICE HOURS	Breakfast 07:00 – 10:30	Lunch 12:30 – 15:00 Dinner 18:30 – 21:30
DRESSCODE	Casual	

EL BASHA BAY, SHARM EL SHEIKH, SOUTH SINAI, EGYPT



+ 20 (69) 3602900



[info@reefoasis.com.eg](mailto:info@reefoasis.com.eg)

The Hotel Management has the right to make any changes to the above concept according to weather conditions, hotel occupancy, guests requests and force majeure, without prior notice.





# A LA CARTE RESTAURANTS



Restaurant	Cuisine	Meal	Service Hours	Indoor	Outdoor	Reservation
AL DENTE	Italian	Dinner	19:00 - 21:30	102	0	YES
Serving an A La Carte menu and offering a selection of traditional Italian dishes along with a variety of Chef Specialties. Some items are with an extra charge. Reservation is required.						
FISHERMAN'S	Seafood	Dinner	19:00 - 21:30	70	48	YES
Serving an A La Carte menu and offering a selection of traditional Fish & Seafood dishes along with a variety of Chef Specialties, against a fixed charge. Reservation is required.						
LE ROMANTIQUE	French	Dinner	18:30 - 21:00	52		YES
A fine dining restaurant serving an A La Carte menu offering a selection of traditional favorite French dishes along with variety of fish plates and Chef Specialties. Restaurant is with an extra charge. Reservation is required.						
TABLE SERVICE	Coffee and tea, along with a choice of soft drinks and juices, local beer, local wine and a variety of local alcoholic drinks are served within the concept. All bottled drinks and imported Alcohol is subject to charge.					
DRESSCODE	Smart Casual					



EL BASHA BAY, SHARM EL SHEIKH, SOUTH SINAI, EGYPT



+ 20 (69) 3602900



[info@reefoasis.com.eg](mailto:info@reefoasis.com.eg)

The Hotel Management has the right to make any changes to the above concept according to weather conditions, hotel occupancy, guests requests and force majeure, without prior notice.



# BARS & SNACKS



BAR	Service Hours	Seating		Description
		In	Out	
"LEISURE" POOL BAR		LOCATION &CONCEPT		A casual bar and snack area located at the swimming pool
	10:00 - 17:30	84		Coffee and tea, along with a choice of soft drinks and juices, local beer and a variety of local alcoholic drinks and local cocktails are served within the concept. All bottled drinks and imported Alcohol is subject to charge.
	10:00 - 12:00			Snacks: Offering a selection of snacks and fresh made croissants accompanied with jam and honey.
	12:00 - 16:00			Snacks: Offering a selection of freshly prepared salads and seasonal salads. From the Grill; a selection of fish, meat or chicken grilled a la minute and served with sautéed vegetables, a choice of potatoes and popular sauces. Plus a choice of seasonal fruits.
"THE PUB" BAR		LOCATION &CONCEPT		A 24 hours casual bar with magnificent view of Red Sea, offering a unique ambience for those who would like to watch important sport events from all over the world. The pub is also favorite location for an aperitif before the dinner while enjoying the panoramic views.
	24 Hour	90	72	Coffee and tea, along with a choice of soft drinks and juices, local beer, local wine and a variety of local alcoholic drinks and local cocktails are served within the concept. All bottled drinks and imported Alcohol is subject to charge.
	05:00 - 12:00			Lite Continental Breakfast: Offering a selection of Danishes and croissants with jam and honey portions.
	15:00 - 18:00 21:00 - 02:00			Snack Service: A selection of cold sandwiches, snacks such as fish, burgers, chicken pane served with French fries will be available from the menu at selected times in the Gallery area in front of the Pub.

EL BASHA BAY, SHARM EL SHEIKH, SOUTH SINAI, EGYPT



+ 20 (69) 3602900



[info@reefoasis.com.eg](mailto:info@reefoasis.com.eg)

The Hotel Management has the right to make any changes to the above concept according to weather conditions, hotel occupancy, guests requests and force majeure, without prior notice.



BAR	Service Hours	Seating		Description
		In	Out	
"HORIZON" POOL BAR	10:00 - 17:30	LOCATION & CONCEPT		A casual bar and snack area located at the swimming pool
			40	Coffee and tea, along with a choice of soft drinks and juices, local beer and a variety of local alcoholic drinks and local cocktails are served within the concept. All bottled drinks and imported Alcohol is subject to charge.
	15:00 - 17:00			Pizza: Offering a selection of freshly made pizzas straight from the oven
"PANORAMA TERRACE"	19:00 - 02:00	LOCATION & CONCEPT		A casual bar that is open in the evenings with stunning views of the Red Sea.
			135	Coffee and tea, along with a choice of soft drinks and juices, local beer, local wine and a variety of local alcoholic drinks and local cocktails are served within the concept. All bottled drinks and imported Alcohol is subject to charge.
"RELAX" POOL BAR	10:00 - 17:30	LOCATION & CONCEPT		A casual bar and snack area located at the swimming pool
			80	Coffee and tea, along with a choice of soft drinks and juices, local beer and a variety of local alcoholic drinks and local cocktails are served within the concept. All bottled drinks and imported Alcohol is subject to charge.
	10:00 - 17:00			Snacks: Offering a selection of light cold snacks such as sandwiches, Danish pastry's, croissants and fresh fruit, during the day.
"ARENA" BAR	17:00 - 00:00	LOCATION & CONCEPT		Situated in the center of the hotel, the bar is situated next to the Amphitheatre, to enjoy drinks while watching the evening entertainment.
			240	Coffee and tea, along with a choice of soft drinks and juices, local beer and a variety of local alcoholic drinks and cocktails are served within the concept. All bottled drinks and imported Alcohol is subject to charge.
"THE PIANO" BAR	16:00 - 00:00	36		Located in the Lobby area of the hotel and offering bar service. This is an alternative bar for those who would like to escape the sun or to enjoy aperitifs before dinner and enjoy the rest of the evening in a relaxed atmosphere.
				Coffee and tea, along with a choice of soft drinks and juices, local beer, local wine and a variety of local alcoholic drinks and cocktails are served within the concept; however a minimum charge applies, per person. All bottled drinks and imported Alcohol is subject to charge.





BAR	Service Hours	Seating		Description
		In	Out	
"BLUE" BEACH BAR & SNACK AREA		LOCATION &CONCEPT		A casual bar and restaurant located directly on the beach
	10:00 - 17:30	90		Coffee and tea, along with a choice of soft drinks, juices and local beer. All bottled drinks and imported Alcohol is subject to charge.
	11:00 - 15:00			Snacks: From the grill, fresh homemade beef burgers, kofta or chicken served with freshly baked rolls and a selection of fresh condiments and salads.
	11:00 - 17:00			Pizzeria: Offering a selection of freshly made pizzas straight from the oven
"CARIBBEAN" BAR	19:00 02:00	62		Coffee and tea, along with a choice of soft drinks and juices, local beer, local wine and a variety of local alcoholic drinks and local cocktails are served within the concept. All bottled drinks and imported Alcohol is subject to charge.
	15:00 - 18:00 21:00 - 02:00			Snacks: A selection of cold sandwiches, snacks such as fish, burgers, chicken pane served with French fries will be available from the menu at selected times in the Gallery area in front of the Caribbean Bar.



EL BASHA BAY, SHARM EL SHEIKH, SOUTH SINAI, EGYPT



+ 20 (69) 3602900



[info@reefoasis.com.eg](mailto:info@reefoasis.com.eg)

The Hotel Management has the right to make any changes to the above concept according to weather conditions, hotel occupancy, guests requests and force majeure, without prior notice.



## Other Facilities



General Facilities	IN HOTEL	LOCAL AREA	EXTRA CHARGE	General Facilities	IN HOTEL	LOCAL AREA	EXTRA CHARGE
Hair Dresser	✓		YES	Jacuzzi	✓		NO
Boutique	x	✓	YES	Turkish Bath	x	✓	YES
Souvenirs	✓		YES	Sauna	✓		NO
Book Shop	x	✓	YES	Steam Bath	✓		NO
Supermarket	x	✓	YES	Massage	✓		YES
Mini Market	✓		YES	Thalasso Therapy	✓		YES
Shops	✓		YES	Beauty Salon	✓		YES
Laundry Service	✓		YES	Table Tennis	✓		NO
Dry Cleaning	✓		YES	Tennis Court	✓		YES
Gym	✓		NO	Tennis Court/ Lights	✓		YES
Parking	✓		NO	Billiards	✓		YES
Medical Services	✓		YES	Volleyball Court	✓		NO
Pharmacy	✓		YES	Football Court	✓		NO
Library/Book Swap	✓		NO	Squash	x	✓	YES
Internet Café	✓		YES	Pedallo	✓		YES
Wi-Fi Connection	✓		NO	Parasailing	x	✓	YES
Games Room	✓		YES	Banana Boat	x	✓	YES
Bicycle Rental	✓		YES	Speed Boat	x	✓	YES
Car Rental	✓		YES	Glass Boat	x	✓	YES
Horse Riding	✓		YES	Scuba Diving	✓		YES
Bowling	✓		YES				

EL BASHA BAY, SHARM EL SHEIKH, SOUTH SINAI, EGYPT



+ 20 (69) 3602900



[info@reefoasis.com.eg](mailto:info@reefoasis.com.eg)

The Hotel Management has the right to make any changes to the above concept according to weather conditions, hotel occupancy, guests requests and force majeure, without prior notice.



## KIDS ACTIVITIES



Mini Club under Parental Supervision	Various Activities for Children 4 – 12 years old
Mini Disco Every Evening	Movie Nights



EL BASHA BAY, SHARM EL SHEIKH, SOUTH SINAI, EGYPT



+ 20 (69) 3602900



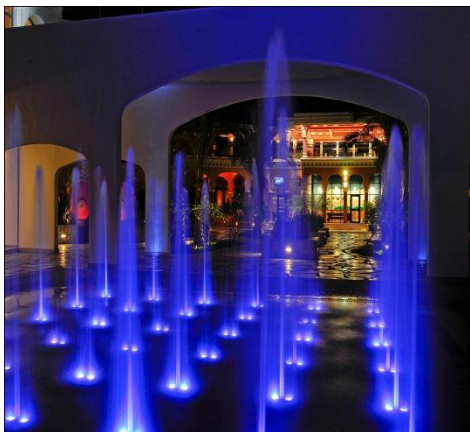
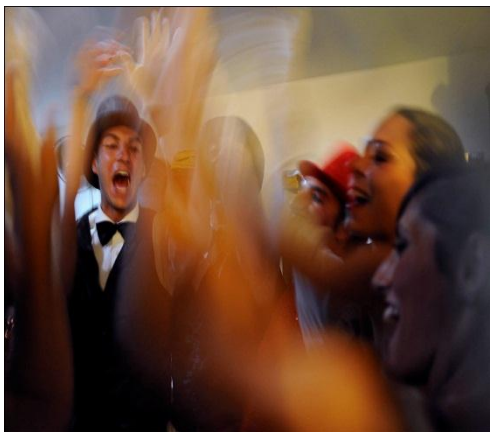
[info@reefoasis.com.eg](mailto:info@reefoasis.com.eg)

The Hotel Management has the right to make any changes to the above concept according to weather conditions, hotel occupancy, guests requests and force majeure, without prior notice.





# ANIMATION ACTIVITIES



Aqua Aerobics	Beach Volleyball
Mini Football	Darts
Evening Shows	Live Musicians and Singers



# COVID-19 PROTOCOLS:

At Reef Oasis Hotels & Resorts we are committed to ensuring the safety and wellbeing of all our guests and staff.

We are proud that our commitment has been acknowledged the local authorities and by trusted public & private health sector authorities by achieving COVID-19 Response certification from SGS.

We have implemented a new set of Hygiene, Health & Safety Procedures, to protect the safety of our guests and staff in all our hotels. These procedures are strictly adhered to with a team of managers ensuring that they are being implemented and making enhancements where necessary when new updates are received.

For your safety and comfort:

- ❖ Staff have been vaccinated
- ❖ Staff are required to wear masks in public areas
- ❖ Regular temperature checks of all staff
- ❖ Hand Sanitizer is available throughout the resort
- ❖ Please respect social distancing guidelines
- ❖ Temperature checks of all guests at restaurant entrances
- ❖

Due to the new procedures being implemented, some services and amenities may not be available or some services and amenities will be with reduced capacities and modified set-ups in our hotels.

**Preverisk**  
Group



**Covid-19 Hygiene Response**  
Preverisk Group 11/19/2020 Audit Ref: 243786  
Registered in Spain with VAT ID ESB57285959

## Health and Hygiene Certification Covid-19 Hygiene Response Reef Oasis Blue Bay Resort & Spa

Preverisk criteria for issuing the Covid-19 Hygiene Response Certificate means that:

This establishment has satisfactorily implemented a series of measures addressed to prevent or mitigate the potential spread of Covid-19 illness amongst their guests, staff and visitors.

These measures are based on international recommendations issued by official bodies like the World Health Organisation and other international bodies (HPA, CDC, ELDSNET, etc.), plus National regulations.

These measures have been adapted to the different departments and activities (hotel, excursion, restaurant, etc.)

A risk based approach has been adopted when looking at their operations.



The main procedures to mitigate the potential spread of illness are on the line of:

**Pre-opening tasks have been reviewed, including essential aspects of:**

- Fire safety
- Gas safety
- Food hygiene
- Staff policies
- Water systems, Pool hygiene and safety
- Sewage plant treatment, and wastewater used for irrigating gardens (if applicable)
- Laundry
- Pest control



**Specific Covid-19 measures based on:**

- Social distancing
- Environmental hygiene (cleaning and disinfection)
- Personal hygiene and the utilisation of protective equipment
- Crisis management and confinement procedures for suspected or confirmed cases.

The preventative measures have been validated by means of a Responsible Self Assessment Questionnaire completed by establishment and validated remotely by Preverisk auditors and confirmed by site visits from Preverisk auditors.



Information on the  
procedures applied

11/19/2020

**Dr. Ahmed Karam**  
Technical Manager Preverisk Egypt

EL BASHA BAY, SHARM EL SHEIKH, SOUTH SINAI, EGYPT ☎ + 20 (69) 3602900 📧 [info@reefoasis.com.eg](mailto:info@reefoasis.com.eg)

The Hotel Management has the right to make any changes to the above concept according to weather conditions, hotel occupancy, guests requests and force majeure, without prior notice.



# REEF OASIS SPA



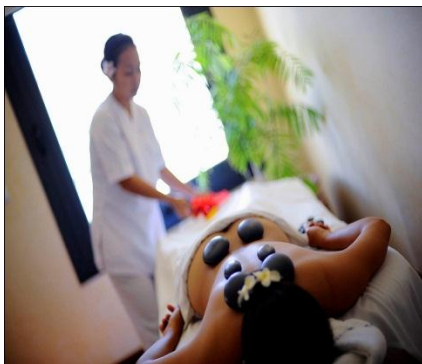
## SPA & WELLNESS REEF OASIS SPA COLLECTION

Our Spas are luxurious salons of beauty and wellness. Here you will be welcomed by highly qualified specialists offering a wide range of SPA programs and treatments. Enjoy, relax your body and your soul, and become younger and more beautiful in an atmosphere of care and attention.

Reef Oasis Spa Collection offers thalassotherapy, massage treatments, body treatments, facial care, hand & foot care, hair salon and many other packages and programs. We also offer a fitness center where our personal trainers will tailor-make your fitness program to suit your personal needs. Whatever the occasion, we hope you find the modern Oasis you seek here at Reef Oasis Spa Collection.

Should you require any further inquiries or assistance please feel free to contact them on the following email:

[e.m@reefoasis-spacollection.com](mailto:e.m@reefoasis-spacollection.com)



EL BASHA BAY, SHARM EL SHEIKH, SOUTH SINAI, EGYPT



+ 20 (69) 3602900



[info@reefoasis.com.eg](mailto:info@reefoasis.com.eg)

The Hotel Management has the right to make any changes to the above concept according to weather conditions, hotel occupancy, guests requests and force majeure, without prior notice.





# REEF OASIS DIVE CLUB



## Quality Scuba Diving & PADI Courses In Sharm El Sheikh

The Red Sea is one of the best diving destinations in the world. Thousands of divers come to Sharm every year to enjoy the splendor and the variety of underwater life on the Red Sea coral reefs.

Our dive centers are located in two hotels in Sharm, Reef Oasis Blue Bay and Reef Oasis Beach. In each of our dive centers you will find beautiful sandy beaches, excellent home reefs and the most important - a professional diving organization. All year round we offer first-class service: fascinating diving for certified divers, PADI diving courses from basic to professional levels, snorkeling trips. Our international team of professional instructors will lead you in an unforgettable experience.

Here in Sharm you will find all you need for unforgettable holidays: warm and sunny weather all year long, wonderful beaches, amazing underwater life, perfect logistics, a comfortable environment in our two branches in Reef Oasis Blue Bay Resort & Spa and Reef Oasis Beach Resort.

Should you require any further inquiries or assistance please feel free to contact them on the following email:  
[office.sm@reefoasisdiveclub.com](mailto:office.sm@reefoasisdiveclub.com)



EL BASHA BAY, SHARM EL SHEIKH, SOUTH SINAI, EGYPT

+ 20 (69) 3602900

[info@reefoasis.com.eg](mailto:info@reefoasis.com.eg)

The Hotel Management has the right to make any changes to the above concept according to weather conditions, hotel occupancy, guests requests and force majeure, without prior notice.

