



P A D M A
UBUD

FACT SHEET

Name of the property	Padma Resort Ubud
Address	Banjar Carik, Desa Puhu – Payangan
Phone number	+62 361 301 1111
Fax number	+62 361 301 1188
Website	www.PadmaResortUbud.com
Opening date	October 2015

Offices:

Sales & Marketing Office

Jl. Padma No. 1, Legian – Bali 80361
E. sales.ubud@padmahotels.com

Jakarta Sales Office

Blok G 4, Wijaya Graha Puri
Jl. Wijaya II, Jakarta 12160, Indonesia
T. + 62 21 720 2859
F. + 62 21 722 0506
E. jso@padmahotels.com

Japan Sales Office

Mac Marketing Services

#402 Claire SHIBA, 4-5-15 Shiba
Minato-ku, Tokyo 108-0014 Japan
P. 03-5419-3741 F. 03-5419-3742
E. sales@macmarketingservice.com
www.macmarketingservice.com

About the property

Ensnconced within an untouched river valley overlooking the enchanting bamboo forests of Payangan in Ubud; the 149-room Padma Resort Ubud is an expansive destination resort located north of Bali's celebrated cultural centre.

Padma Resort Ubud features the five-star amenities and facilities offered by the renowned Padma hospitality brand including stunning views from every room or suite, an 89-metre infinity swimming pool and signature world-class dining venues.

Comprising 11 hectares, Padma Resort Ubud offers discerning travelers a rare opportunity to experience contemporary Balinese architecture and artworks in an unparalleled natural setting.

Location

49 km from Padma Resort Legian
57 km from Ngurah Rai International Airport
45 km from Denpasar
34 km from Sukawati Traditional Market
21 km from Monkey Forest Ubud

ROOM CATEGORIES:

**PREMIER ROOM
(48 rooms)**

Size: 59 SQM



**PREMIER DELUXE ROOM
(23 rooms)**

Size: 59 SQM



**PREMIER CLUB ROOM
(72 rooms)**

Size: 59 SQM



**ONE BEDROOM SUITE
(3 ROOMS)**

Size: 118 SQM



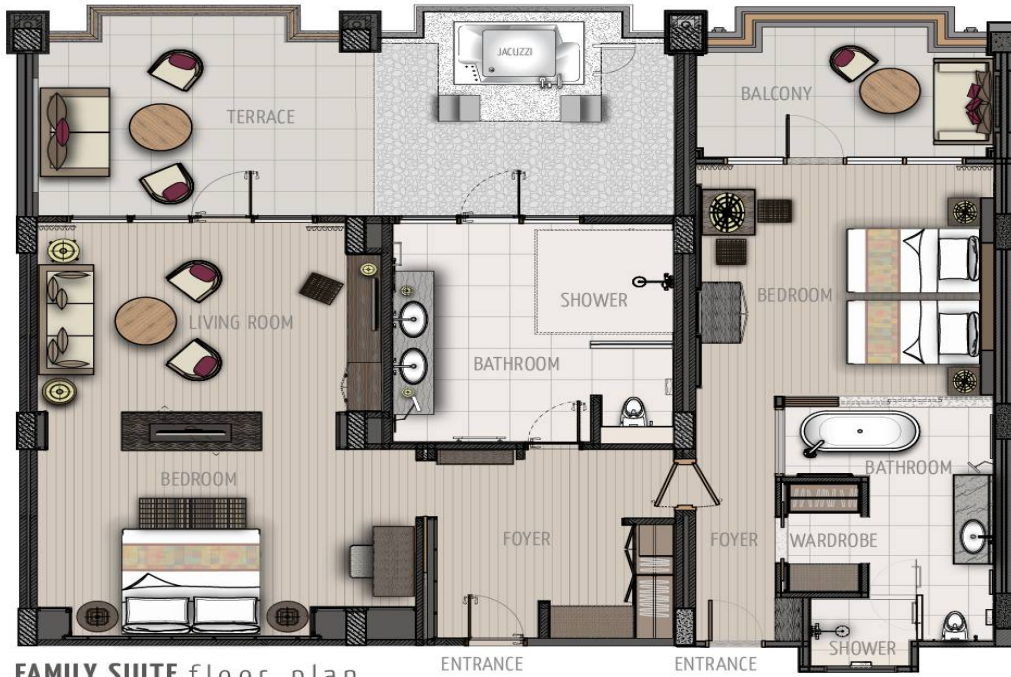
**TWO BEDROOM SUITE
(1 ROOM)**

Size: 177 SQM



**FAMILY SUITE
(2 ROOM)**

Size: 177 SQM



FAMILY SUITE floor plan

Guest's Rooms Features

- Private balcony/terrace
- Private bathroom with separate shower and bath tub
- Individually controlled AC
- IDD telephone
- Shaver outlet and adaptors
- Television with international channels
- Hairdryer
- Slippers
- Bathrobe & Yukata
- Coffee/tea making facilities
- Safety deposit box
- Bedside control panel
- Computerized key card
- Private DVD player
- Complimentary Internet Connection
- Iron & Ironing board in all rooms and suites
- Alarm Clock with Cable Docking
- Voltage: 220 volts; 10-16 ampere; 50 Hz; number of prongs 2 poles with the earth
- Coffee espresso machine
- Towel warmer

Services:

- Laundry/dry clean (07.00-19.00)
- Pillow Menu
- In-house clinic
- 24-hour Room Service
- Car rental
- Car park
- Padma Spa
- Foreign exchange
- Mail and postage services
- Wheelchairs
- Baby-sitting service (at additional charge, Max. age: 5 years old and advance booking is required)
- Wake-up call
- Free WiFi service on all areas within premises

Facilities:

- WiFi connection
- 48 inch television
- Magazines
- Coffee, tea, and Mineral water

Sports & Recreations:

Infinity swimming pool

- Open 07.00 – 21.00
- Adult pool size: 89 m x 7.5 m
Depth 130 cm
- Children pool size: 8 m x 5 m
Depth 45 cm
- Jacuzzi Pool diameter 261 cm

Jogging track

- 3.4 km length

Kids Club& Games Centre:

- Open 09.00 – 20.30
- Kids Club for children age 4 to 12 years old
- Games Centre for children age 8 to 12 years old
- Baby-sitting service is available for younger children*

Fitness Centre

- Open 06.00 – 21.00.
- Separate steam and sauna facilities for male and female guests.
- Personal training program*.

*) Additional charge applies.

RESTAURANTS AND LOUNGES:

- The Puhu Restaurant (opens daily from 6.30 -10.30 and 14.30 - 22.30)
- The Lounge (opens daily from 11.00 – 21.00)
- The Pool Cafe & Bar (opens daily from 11.30 – 21.00)
- Sunken Pool Bar (opens daily from 10.00 – 21.00)
- Wine Lounge (opens daily from 11.30 – 23.00)

MEETINGS AT PADMA RESORT UBUD

Whether it is a meeting, corporate gathering, presentation or team-building event, Padma Resort Ubud is the perfect location to mix business with pleasure.



Map - Padma Resort Ubud

